



Kempinski Hotel  
Suzhou

CHINA

苏州金鸡湖凯宾斯基大酒店





## The Hotel

*Kempinski Hotel Suzhou is Kempinski's latest collection of individual to open in China.*

*Situated along Jinjihu Avenue and Guobin Road, the Kempinski Hotel Suzhou emerges before your very eyes after a short but scenic drive within large parkland which encompasses a 27-hole Jinji Lake International Golf Course, Villas and Dushu Lake. The entire surrounding to this property is refreshingly lush with trees and picturesque landscaping providing an atmosphere of tranquility and peace.*

*Complementing this are Kempinski's 458 guestrooms from 48 sqm in size and suites ranging from 80 sqm, uniquely designed restaurants and bars and an impressive selection of Meeting & Conference rooms including Suzhou's largest ballroom which can seat 1,200 person for a banquet.*

*Apart from the hotel interior which is built to meet with the most challenging business and meeting requirements of international standard, the exterior of the hotel offers leisure guests with the option of outdoor activities such as jogging, cycling and leisurely strolls in the evening. This all is within a secured and private environment.*





## Rooms & Suites

The Hotel features 458 rooms ranging from 48sqm and above, with plush contemporary furnishings, expansive marble bathrooms with separate bath-tub and rainforest shower and 40" flat-screen TV with a wide selection of satellite channels. Majority of rooms command a breath-taking view of either Dushu Lake, Jinji Lake or the adjacent golf course.

### Number of Room & Suites

458 rooms and suites including :

- 1 Presidential Suite
- 4 Diplomatic Suites
- 36 Executive Suites
- 36 Panorama Suites
- 107 Executive Rooms
- 274 Deluxe Rooms

### Guestrooms Feature :

- Spacious bedrooms from 48 sqm each
- Central air-condition with individual temperature control
- Wireless Internet access
- 40 inch Flat screen TV
- IDD telephone with voicemail system
- Complimentary coffee & tea making facilities
- Mini-bar
- Electronic safe
- Wide selection of international and local TV channels
- Super king-size comfort beds
- Non-smoking floors

### Bathroom Features :

- Hairdryer and bath amenities
- Shaving / beauty mirror
- Bathtub with shower
- Separate individual rainforest shower



## Dining

### Lobby Lounge

*A perfect meeting place with a resplendent view over the garden and Dushu Lake. Subtle elegance combined with the friendly atmosphere makes it easily the place to be. Traditional cocktails are served alongside new creations or if you prefer, wine, selection of fine chinese tea or hot beverages, complimented by refined Snacks served by gracious*

### Wang Hu Ge

*Our Chinese Restaurant serves exquisite Cantonese and Hual Yang cuisine. Our talented Chef and his dynamic team welcome you to taste his signature dishes. 11 individual private rooms with its very own style and concept catering to all occasions or choose to seat at the main ala care restaurant where one can enjoy the impressive view over the lake. An ideal venue, be it for personal or business meals where we provide the service and attention one is accustomed to of a premier restaurant.*

### Seasons Café

*Warm earthy tones with conducive atmosphere are the dominant feature of our all day dining Café. An ideal place to meet and relax, Seasons Café features sumptuous buffets and a wide a la carte selection. From South East Asian Hawker fare to Chinese favorites and international specialties, our selection of cuisines will impress even the most discerning palates!*

### Paulaner Brauhaus (Opening Soon)

*The world reknowned Paulaner Brauhaus can only be found at Kempinski. This uniquely designed outlet offers seating on duplex floors with full view of Dushu Lake and garden surrounding.*

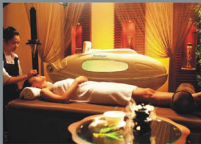
*Paulaner Brauhaus, originally founded in 1634 in the city of Munich serves a perfect combination of authentic Bavarian menu and fresh brewed beer. The Microbrewery brews a variety of beers according to the German Purity Law established in 1516.*

*The casual but charming service is sure to present an unforgettable experience to all.*

### Panorama Cigar & Wine Bar (Opening Soon)

*Enjoy a wide selection of cognacs, exclusive wines and a tempting variety of cocktails with your choice of a premium selection of fine cigars at the most exclusive Bar in town located on the highest floor.*





## Wellness & Leisure

Over 4,000 sqm Health & Recreation Centre features a complete range of facilities for guests to enjoy.

Guests looking to maintain total health and wellness can enjoy working out in the Gym that features top-of-the-line fitness equipment which includes cardiovascular and weight machines. Personal fitness courses such as aerobics and yoga are part of the daily activities available in the Fitness Studio. A 50m long in-door swimming pool is fully serving guests. A Wellness Bar is also found in this indoor haven.

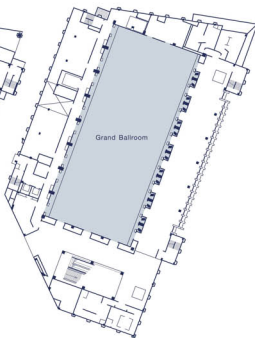
Little encouragement is needed for those who wish to head to the spa with its selection of refreshing mind and body treatments, steam rooms, saunas and Jacuzzis. Spa facilities renovation is presently in-progress and will be available by mid-2009.



## Catering & Meeting Venues



Garden Level



Lobby Level

### Areas and Capacities

Room	Sqm (m <sup>2</sup> ) net	Length (m)	Width (m)	Height (m)	Classroom	Theatre	U-Shape	Banquet	Cocktail	Boardroom
Kempinski Grand Ballroom	1850	66.7	27.7	15	1000	2000	-	1200	2000	-
K1 Function Room	125	12.6	10.5	4	45	80	36	50	70	24
K2 Function Room	130	12.6	10.5	4	45	90	36	50	70	24
K3 Function Room	125	12.6	10.5	4	45	80	36	50	70	24
K4 Function Room	120	15.4	8	4	60	80	36	40	70	24
K5 Function Room	120	15.4	8	4	60	80	36	40	70	24
K6 Function Room	120	15.4	8	4	60	80	36	40	70	24
K7 Function Room	170	11	15.4	4	70	100	36	60	80	30
K8 Function Room	170	11	15.4	4	70	100	36	60	80	30
K9 BC Boardroom	80	10	8	4	-	-	-	-	-	12

## Meetings & Events

With a variation of 9 multi-function rooms ranging from 120 sqm to the 1,850 sqm Kempinski Grand Ballroom which can accommodate up to 1,200 person for a banquet and 1,800 person for a cocktail, our dedicated and experienced team in banquet will ensure your event proceeds without a fault.

With inspiring details and delightful cuisine, the ballroom can be easily transformed from official ceremonies, meeting and conferences, exhibitions to banquets to being the ideal wedding celebration venue. Every sight, sound and flavor of your event is carefully selected to reflect your individuality.

The Grand Ballroom is 15m in height with no pillars and for those inclined toward the grandiose, the ceiling is adorned by 24 intricately designed chandeliers, all specially imported from Czech Republic.



Totalling 2,600 sqm of meeting and banquet space to suit every occasion, our dedicated Conference Center includes a meeting planner's lounge and business center, with two meeting rooms, computer work stations, secretarial support and services. Wireless internet access is available throughout the hotel.

Experienced and professional event sales team will ensure that every function, whether it is a meeting, conference, dinner or banquet, is tailored to suit your specific requirements and expectations.

Furthermore, the catering and banquet service team are also comfortable handling large-scale events and private functions creating a wide variety of dishes to suit every event.

All function rooms are equipped with wireless broadband internet access and the latest in audio/video technology



## Suzhou - The Destination

*Suzhou also known as the "Venice of the Orient" as referred to by Marco Polo, one of the first Europeans to visit and write about Suzhou. Suzhou is favored by a mild climate, rich agricultural land laced with rivers, canals and hundreds of bridges.*

*Many government officials of the Ming and Qing periods were born in Suzhou, and retired there after their government service. Their status in the community, their wealth and the resources of Suzhou made the city a natural center for the construction of Scholar's Gardens.*

*In Suzhou's 2,500 year history, thousands of gardens were built, of which only 60 have survived, 19 of them open to the public. However, those that have endured are a legacy of extraordinary beauty, art and artistry.*

*This area, the "Old City" which is today referred to as the City Centre boasts of ancient architecture with a surrounding of historic and natural beauty.*

## Suzhou's Exclusive Park

*On the other side of the "Old City", just 15 minutes drive to the east, is Suzhou's exclusive park....the modern and thriving commercial centre part of Suzhou which features a 70 km<sup>2</sup> development of grade A offices, commercial enterprises, residential housing, international shopping malls and world class entertainment, leisure and exhibition complex built around the famous Jinji Lake.*

*Despite its continued fast paced development in the worldwide business arena, this locale continues to retain its beautiful landscaping of garden and lakes.*

*Along one of its famous "Dushu Lake" lies The Kempinski Hotel Suzhou.*

*Kempinski*

HOTELIERS SINCE 1897

No.1 Guobin Road, Suzhou Industrial Park, Suzhou, Jiangsu 215021, P.R. China

Tel: +86 512 6289 7888 Fax: +86 512 6289 7866

E-mail: [reservations.suzhou@kempinski.com](mailto:reservations.suzhou@kempinski.com)

Website: [www.kempinski-suzhou.com](http://www.kempinski-suzhou.com)



global hotel alliance