



— PRESS KIT —

Hotel Baltschug Kempinski Moscow

Kempinski
HOTELIERS SINCE 1897



Hotel Baltschug
Kempinski
MOSCOW



— THE PLACE TO BE —

IN THE HEART OF RUSSIA'S CAPITAL

Moscow is the capital and business and trade centre of the Russian Federation. In addition to being one of the fastest-developing world megalopolises, it has always held a special place on the travel agendas of those seeking to enrich their cultural and historical experiences. Every visit to Moscow offers a unique opportunity to experience the fusion of contemporary art with rich traditions and to journey through the cultural heritage spanning from 1147 to 2024.

Today, Moscow is a cosmopolitan city of more than 13 million people – a city with historical flair and a modern twist, offering art, culture, gastronomy, nightclubs and excellent luxury shopping.

The classic European grand hotel, with a historical façade dating back to 1898, is situated in the very heart of Moscow, directly

opposite the Kremlin, Red Square and St. Basil's Cathedral. Long a byword for style, comfort and service, this imposing hotel provides business and leisure guests alike with the perfect base from which to explore the capital.

Hotel Baltshug Kempinski is invariably connected with Moscow's history and the signature attractions of the Russian capital. More than 100 years ago, the views from the Baltshug were immortalised by famous Russian artists, and today those same views remain cherished memories of Moscow for the hotel's guests.

The legendary location and unwavering commitment to provide perfect comfort make the Baltshug 'the Place to Be'.

KEMPINSKI AG

- Europe's oldest luxury hotel group
- 82 hotels and residences
- Present in 35 countries
- More than 28 prestigious projects under development
- Portfolio includes historic landmark properties, award-winning urban lifestyle hotels, outstanding resorts and prestigious residences
- Founding member of the Global Hotel Alliance (GHA)

KEMPINSKI.COM

HOTEL BALTSCHUG KEMPINSKI MOSCOW

- 227 rooms and suites
- 6 Red Square Suites and 6 Kremlin Suites
- 6 Design Suites
- Baltshug Grill restaurant and Café Kranzler
- Lobby Lounge bar
- 12 conference/banqueting rooms
- Health Club (pool, sauna, gym)
- Beauty Centre
- Business Centre

KEMPINSKI.COM/HOTEL-BALTSCHUG





VIEW OF THE MOSKVOETSKY BRIDGE, THE KREMLIN AND ST. BASIL'S CATHEDRAL BY A. KUINDZHI

— TRAVELLING BACK IN TIME —

HISTORY OF BALTSCHUG'S MOSCOW PAST AND PRESENT

If the streets of the city are likened to the growth rings of an ancient tree, then Baltschug Street is one of the oldest rings of Moscow.

Initially, the Baltschug area was known as a verdant meadow, and then the Muscovite princes built a princely garden here. Later, the Lower Moscow River region became a merchant's kingdom. By the order of Ivan the Terrible, the first drinking tavern was opened 'by the lively bridge' and was reserved for the exclusive use of royal guardsmen – the Oprichniki.

The island was separated from the Moscow River in the 18th century, after the construction of the water canal. A series of roads were built, and after heavy rain, these invariably turned into swamps. Over time, the roads were restored, but the name that had been given to the area largely by the Turkish population, 'Balcheh' (meaning 'swamp' in Turkish), remained.

The amazing view of the Kremlin was one of the main reasons for building coaching inns and tenement buildings on the island.

— The Osipov House —

One of the first to take advantage of the view was A.I. Osipov, owner of a two-storey house built of stone located on the corner of Baltschug Street and the embankment. The apartments that he rented out were in great demand. Business was so good that Osipov's grandchildren came up with a grand plan. In 1897, they commissioned a new building from the well-known architect A.I. Ivanov who, by then, had built some 60 grand buildings in St. Petersburg. The reconstruction of the 'Osipov House' was his first project in Moscow and

made his name known throughout the country. In 1898, the original one and two-storey building on the Baltschug was replaced with a solidly built edifice, complete with corner towers topped with spires. A restaurant was opened on the ground floor, while the upper floors were used as artists' studios. Thanks to the work of Vasnetsov, Kuindzhi, Korovin and others, the views they painted of the Moscow River Bridge, the Kremlin and St. Basil's Cathedral became some of the most recognisable images of the capital.



MOSKVOETSKY BRIDGE BY J. KLEVER AND K. KOROVIN



— From the Past into the Present —

After the revolution in 1917, the building housed the offices of various organisations. In 1928, the Novomoskovskaya Hotel was opened, which later became a hostel for the People's Commissariat for Foreign Affairs. In 1955, it was reopened as the Bucharest Hotel.

Over the years, the building began to show its age, and in the 1980s, the question arose about the need for a complete renovation, for which significant investment was required. The problem of financing was solved in 1989 with the establishment of the joint Soviet/

Austrian venture company 'Baltschug', which commissioned the rebuilding from the Austrian group, Austria Baugesellschaft. Thus began the latest chapter in the long history of hospitality within the building on the banks of the Moscow River. On 1 October 1992, the 'Osipov House' was reborn as Hotel Baltschug Kempinski Moscow, forging a historic link connecting old and new Moscow. With the opening of Hotel Baltschug Kempinski Moscow, a new chapter began in the life of the building and its long history of hospitality.



INTERESTING FACTS

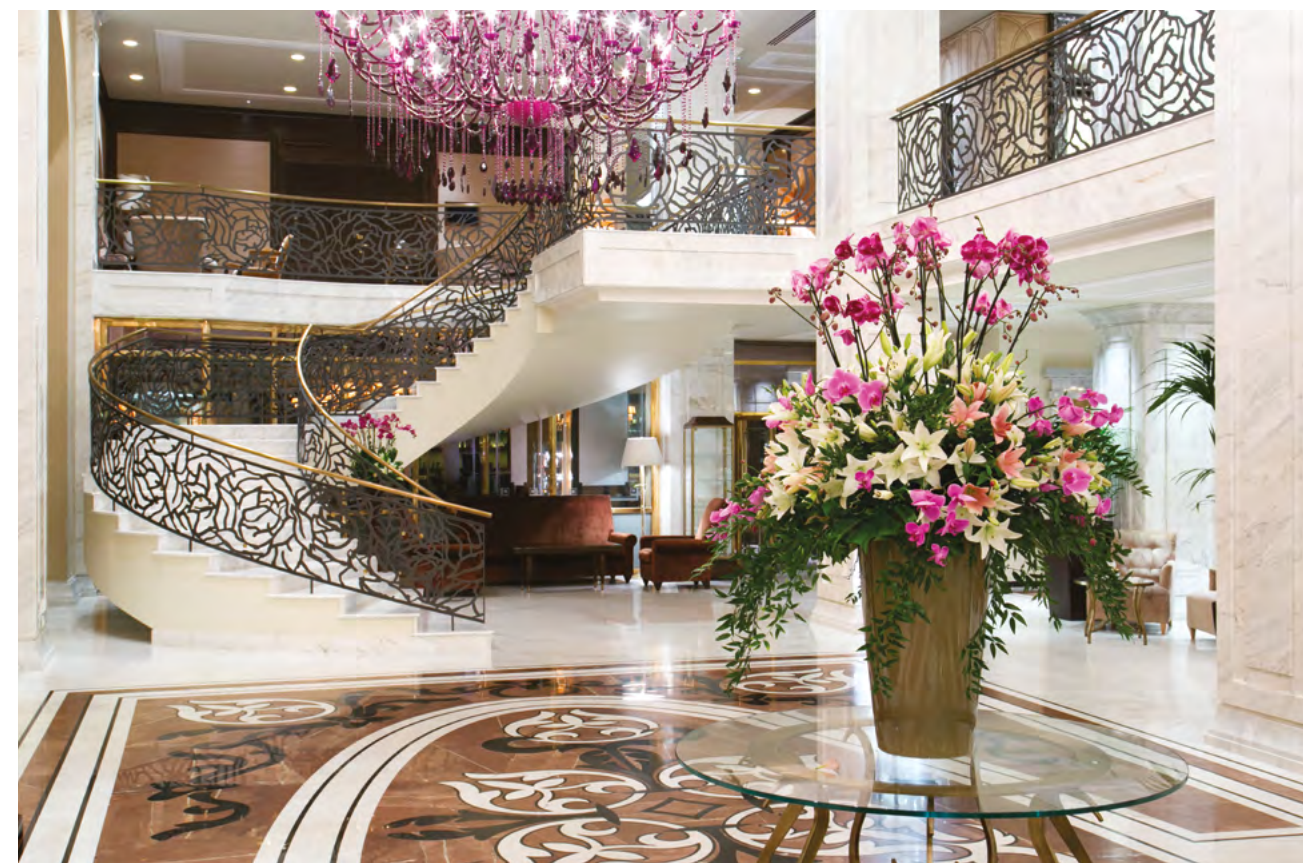
- It was the first international luxury hotel in Moscow as of 1992
- The historical façade dates back to 1898
- More than 50% of the rooms offer spectacular views of Red Square, the Kremlin and St. Basil's Cathedral, all UNESCO World Heritage sites
- In the 16th century, on the orders of Ivan the Terrible, the first tavern (kabak) opened at the Baltschug's location
- The Baltschug is the warmest spot in Moscow, according to weather forecasters
- The terrace of the Library Room is a favoured spot in Moscow for celebrations, TV shows, watching festive fireworks and taking panoramic images, according to social media
- Hotel Baltschug's name is closely connected with the field of art and culture. The main partners of the hotel include the State Historical Museum, St. Basil's Cathedral, Stanislavsky Foundation, State Tretyakov Gallery, Tchaikovsky Moscow State Conservatory, Zaryadye Concert Hall and many others
- In 2013, the Baltschug revealed its full glory after undergoing a room upgrade that enhanced its already renowned service. Created by Zuzana Cambelova & CADÉ design firm, the new design is the epitome of Kempinski style

— THE LOBBY —

MONUMENTAL, SPLENDID AND LUXURIOUS

At first, it seems as if you have not walked into a lobby at all, but rather, an elegant variation on a lounge. The interior is exquisite—from the elegant spiral staircase with its wrought-iron balustrade to the white columns of Italian marble that reflect the intricate pattern of the sparkling floor and the Art Deco furniture. The chandeliers are the standout highlight of the lobby décor, custom-made from Murano glass,

manufactured by the well-known company Masiero, and sized one-and-a-half times larger than usual. The glow from the grand chandeliers enhances the surrounding wall mirrors with vintage frames. In addition to its primary function as a reception area, the lobby is the perfect place for morning coffee, evening drinks, afternoon tea and business meetings.







— STAYING AT THE HOTEL —

227 ROOMS AND SUITES

191 ROOMS

- 58 Superior rooms – 35–40 sq m (377–431 sq ft)
- 93 Deluxe rooms – 37–47 sq m (398–506 sq ft)
- 40 Grand Deluxe rooms – 37–47 sq m (398–506 sq ft)

36 SUITES

- 6 Studio Suites – 68 sq m (732 sq ft)
- 12 Executive Suites – 70–80 sq m (753–861 sq ft)
- 6 Kremlin Suites – 68 sq m (732 sq ft)
- 6 Red Square Suites – 75–85 sq m (807–915 sq ft)
- 6 Design Suites – 70 sq m (753 sq ft)



— ROOMS & SUITES —

WHERE HISTORY IS CREATED

Many of the hotel's rooms and suites enjoy magnificent views of the Moskva River and the Kremlin. The hotel offers a selection of rooms overlooking the hotel's splendid Atrium.

The rooms in the Superior category are decorated in red, beige or blue colours. Overlooking either the city streets or the inner courtyard, each room represents the essence of comfort at Baltschug. These rooms offer a spacious living area with a working desk, a minibar as well as a cosy marble bathroom complete with all necessary amenities.

Deluxe rooms further the design concept and are decorated in red and beige colours. They enjoy unique views of the Kremlin, Red Square and St Basil's Cathedral.

Grand Deluxe rooms feature sophisticated and modern décor that perfectly complements the 100-year-old building. Warm pastel, golden and yellow shades, along with splashes of noble blue, are integrated into plush bed fabrics,

decorative pillows, armchairs, heavy curtains and geometrical carpet patterns. All of the wooden parts of the furniture are custom-made from natural maple veneer with walnut intarsia. Bathrooms feature large bathtubs and standalone showers with rain showerheads.

The Studio Suite boasts views of the main sightseeing places of Moscow—the majestic Kremlin, fascinating St Basil's Cathedral and the core of Russia, the magnificent and tremendous Red Square. From the spacious lounge to the working and dressing area, and the large plasma TV with a DVD player to the minibar, guests can find everything for an exquisitely comfortable stay.

The Executive Suite combines views of the Moskva River embankment with a corner view of Red Square. It offers the ideal combination of business and comfort with one spacious bedroom, a living room and a working and dressing area.



— RED SQUARE SUITE —

THE EPITOME OF SUITE LIVING

Red Square Suites are among the most elegant suites at Hotel Baltschug Kempinski Moscow. The name of the suite reveals its main advantage: all the windows offer a picturesque panoramic view of Red Square, the Kremlin, St. Basil's Cathedral, the Spasskaya Tower and the Moskva River.

This suite resembles an apartment with a spacious separate living area and a bedroom. The bright colours of the interior contrast well with the colourful accents in the details of the room. The suite can be connected with a Grand Deluxe room, expanding it to 125 sq m (1,345 sq ft).





— LINLEY SUITE —

UK STYLE: LINLEY SUITE SENSATION

Hotel Baltshug Kempinski has always been at the forefront of style in Moscow, and the Linley Suite continues this trendsetting tradition with the suite designed by LINLEY of Viscount David Linley, nephew of Her Majesty the Queen. LINLEY represents the epitome of English taste with its emphasis on superb materials and relaxed understatement. David Linley himself believes that 'in an age of mass production and standardisation, the quest for individuality is ever more important'.

LINLEY gives the room a dramatic touch with the circular inlaid dining table and extravagant crystal chandeliers. The armchairs, made of expensive wood and upholstered in leather, are both elegant and solid. The look of the Linley Suite hints at both the 1920s and the 1950s—the years of joie de vivre. Stylish black and white accents are present throughout the suite, from the photographs to the curving hip bath and the geometric design of the window blinds.



— KREMLIN SUITE —

SPECTACULAR VIEWS OF MOSCOW'S MAIN ATTRACTIONS

The sophisticated Kremlin Suites are located in the grand towers of the building, and each offers a remarkable semi-round shaped master bedroom with scenic views of St. Basil's Cathedral and Red Square. The living room provides an abundance of space and light, inviting guests to enjoy the

view of the Kremlin and boats sailing along the Moskva River. A magnificent marble bathroom is equipped with a rain shower and exclusive amenities. Also, upon a guest's request, the suite can combine up to six rooms with the total area of 245 sq m (2,637 sq ft).



— PRINCESS SUITE —

MADE FOR ROYALTY AND DESIGNED BY ROYALTY

Guests of Hotel Baltshug Kempinski can enjoy an unforgettable experience in the suite designed by Her Royal Highness Princess Michael of Kent. The 180 sq m (1,937.5 sq ft) of noble luxury embodies both respectability and style. Light beige, green, ochre, and cream tones prevail in the colours, and the soft ambient light envelops the comfortable sofas with their rich upholstery and cushions. The three-room suite, consisting of two bedrooms and a sitting room between, is harmoniously designed.

The flower patterns of the curtains match those of the wallpaper and the bed coverlets, while the English carpet pattern complements the furniture upholstery. In the Princess Suite, it seems as though you are looking out the windows of your English estate home, and this makes the view of Red Square and the Kremlin even more unexpected and stunning.

— CADE DESIGN SUITE —

LUXURIOUS IN EVERY DETAIL

Designed by Zuzana Cambelova, the luxurious CADE Design Suite draws admiring glances for its elegance and modern character. What one notices first is the perfect blending of colours. Warm white and beige colours with splashes of bright red flowers and ornamental details give the room a unique atmosphere. The suite measures a very generous 70 sq m (753 sq ft) with a bedroom, living area and bathroom. A feeling of spaciousness and an abundance of light are increased by numerous mirrors framed in elegant gold and silver. They add lustre to the gorgeous splendour and stylish ease. The impression of vividness is achieved by a deliberate use of contrasts, such as heavy

drapes juxtaposed with fine fabrics and dark tropical wood reflected in transparent crystal. Splashes of colour not only invite the eye to focus on the harmony of soft pastels, but they also create a sense of ease and serenity.

The marble bathroom is designed in Empire-style. Natural light streams through the window over the bathtub, falling on the mirrored wall surfaces and illuminating the entire space. The imposing mirror frame is at once playful and pleasing, for it plays with the traditions of Empire decor, and pleases the eye by capturing the viewer's image like a formal portrait.





— LIVING DESIGN SUITE —

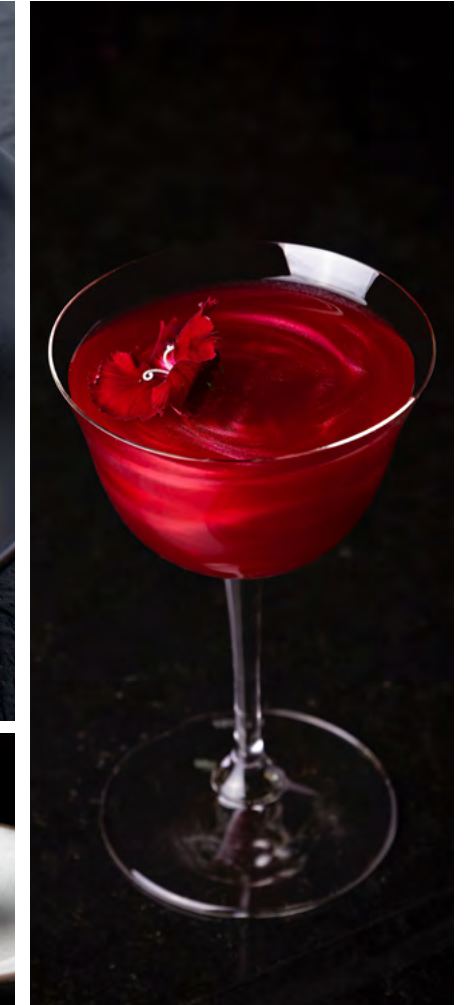
TIMELESS ELEGANCE

Two rooms in this suite are the work of 'Living Design' from Sweden, which exemplify their striking use of subtle forms and an exacting attention to detail.

The drawing room is all about comfort with a pastel-coloured sofa and armchairs set around a central glass coffee table. The tall windows and ambient lighting make for a wonderfully bright and open atmosphere. The clear separation between the drawing room and the bedroom is achieved through a play of contrasting tones. The partition walls are made out of warm, dark-brown colours that both echo and act in harmony with the warm tones found throughout the rest of the room. The harmonious result is a unique atmosphere in which one can relax and rest after a stressful day.

In the bedroom itself, there are discreet intimations of a boudoir with comfortable furniture, a plush divan, and a large bed with decorative curtains, all designed to immerse you in a state of bliss.

The main source of inspiration is the Art Deco period, an era of particular elegance and the age of luxury travel. The pastel palette of the soft furnishing fabrics is set against a background of grey-white striped walls that emphasise the very distinctive decorative objects. The designers have very carefully selected the black-and-white genre photographs in the style of the 1950s to perfectly complement the style of the room.



— GOURMET EXPERIENCE —

INDULGE IN A CULINARY VOYAGE

Since its opening, Hotel Baltshug Kempinski Moscow has become a point of attraction on the capital's gastronomic map. Café Kranzler serves exquisite dishes accompanied by classic and original homemade lemonades and signature cocktails. The Baltshug Grill restaurant is known for its lavish breakfasts and festive brunches. The Lobby Lounge bar hosts traditional tea ceremonies.

Exclusive products are used in the culinary offerings, including premium steaks, top-grade Astrakhan caviar, Far Eastern seafood and fish, vegetables and cheeses delivered from farms. The main element in shaping the flavour of each dish is the first-class, impeccable quality of all ingredients.

— The Baltschug Grill —

GENEROSITY IS NOT A VICE

The Baltschug Grill restaurant, serving daily breakfasts and festive brunches, has all the ingredients of a successful venue: an open kitchen, modern design and a view of the Kremlin.

Warm colours prevail in the restaurant's design, ranging from dominant beige to accents of muted burgundy and olive. Soft light reflected in elements of Bohemian glass creates a cosy and relaxed atmosphere.

The daily breakfast buffet offers more than 100 different dishes, including fresh croissants, puffed pancakes with red caviar, meat, cheese

and fish plates, fresh and pickled vegetables, numerous fruits and juices, traditional Russian porridge cooked in a pot, bacon and sausages, cereals and muesli, yoghurt and cottage cheese, syrniki and various kinds of honey.

Here's the main secret of breakfast from Kempinski: egg dishes are cooked to order and served 'hot off the press' according to the guest's wishes – fried eggs, omelettes with various add-ins of the guest's choice, and even Eggs Benedict with ham or salmon. A cup of coffee, Newby Tea or a glass of Champagne is the perfect addition to your breakfast.



— Café Kranzler —

WHERE HISTORY IS PAIRED WITH GASTRONOMIC INNOVATIONS

Café Kranzler is notable for its modern interior and gastronomic classics on the menu. By day, it has a vibrant atmosphere: with friends catching up, business meetings and everyone in good spirits, enjoying the aroma of freshly ground coffee beans and fresh pastries. By night, Kranzler takes on the spirit of a casual lounge, the perfect place for a relaxed dinner.

To whet the appetite, there is a vodka degustation set. The classic salads are served with a light touch of originality, and a few in particular have become a legacy of the place, such as «Baltshug» Olivier Salad with crayfish,

veal tongue and salmon caviar. The specialties of the menu include caviar and oysters, tartares of premium beef, tuna or salmon, «Nicoise» salad with tuna, classic borscht, pizza from the oven with various toppings, Wiener schnitzel with cranberry sauce, beef stroganoff and pelmeni, grilled dishes and desserts such as signature cheesecake, Russian honey cake, apple strudel with vanilla ice cream and others.

In a separate wine room, one can enjoy pairing the finest wines from cellars in Europe, the New World and Russia with superb food, or explore rare wines by the glass.



— Lobby Lounge Bar —

THE PLACE TO MEET

The cosy and friendly Lobby Lounge bar offers a great selection of desserts, beverages and exquisite drinks.

Not to be missed is the Baltschug High Tea, with signature sandwiches, freshly baked scones and sweet delights. On the renewed étagère, one will also find a set of exquisite canapés, such as sliced Parma ham on toasted farmhouse bread with aged balsamic butter, crunchy duck confit praline with a sweet

lingon-berry dip and vol-au-vent filled with salmon caviar, fresh cucumber and sour cream.

Another exclusive way to experience Moscow's gastronomic culture is through the Moscow Tea Ceremony. Tea is served with traditional Russian pastries, as well as three kinds of jam, namely raspberry, blueberry and blackcurrant. In addition, an assortment of canapés, sweets and fruits is available to complement the traditional Moscow tea ceremony.



— MEETINGS & EVENTS —

A VENUE FOR EVERY OCCASION IN MOSCOW

The entire second floor is a multifunctional conference area. Twelve modern multifunctional transformer halls combine luxury and innovation, offering magnificent views of the Kremlin and state-of-the-art technical equipment. A chef will create a menu especially for your event, and the banqueting team will provide impeccable service.

The Vladimir Ballroom, accommodating up to 250 people, is ideal for conferences, balls and receptions and offers access from two foyers.

The Moscow Room, with panoramic views of the Kremlin and Red Square, is a fashionable space for cocktail parties and social events for up to 200 guests. The Novgorod, Yaroslavl, Palekh, Suzdal and Rondell rooms are perfect for conferences and business meetings.

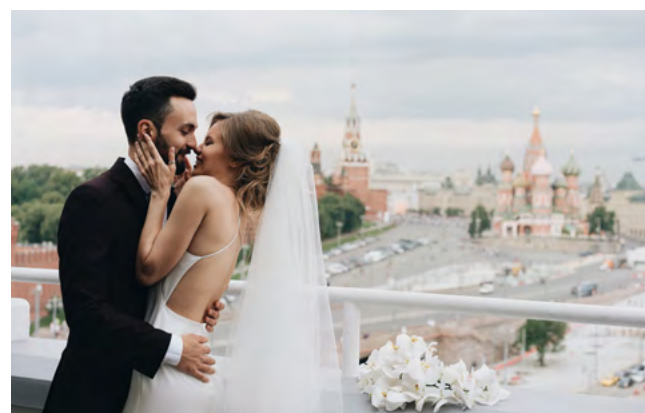
Located on the 3rd floor «Atrium» is a spacious hall with a total area of 416 sq.m., the «patio» of the hotel, perfect for large exhibitions and conferences, private and corporate events.

— THE LIBRARY ROOM —

SCENIC VIEWS, TREASURED MOMENTS

A business meeting or presentation, birthday party, cocktail reception or wedding celebration, the Library Room in Hotel Baltchug Kempinski Moscow makes any occasion truly remarkable. The room and its terrace, located on the rooftop, open up to

views of the multi-coloured domes of St. Basil's Cathedral, the Kremlin towers and Red Square, recognised as a UNESCO World Heritage Site. The picturesque skyline showcases both the oldest and the newest parts of 877-year-old Moscow.



— THE HEALTH CLUB BALTSCHUG —

A HEALTHY SOUL, AN INSPIRED BODY

The Health Club Baltschug spans a total area of 440 sq m (4,736 sq ft). Located on the ground floor of the hotel, it offers a full range of wellness facilities, including a beautiful heated pool, a whirlpool bath and men's and women's saunas.

Special attention is given to the gym, which is open early in the morning until late at night, seven days a week. Equipped with modern fitness equipment made by the Italian company Technogym, the gym offers different types of membership.



— BEAUTY CENTRE BALTSCHUG —

THE CUSTODIANS OF BEAUTY

The hotel has its own Beauty Centre Baltschug, which has long been a popular place for figures in show business, businessmen and the political elite. The salon offers a full range of hairdressing

services by La Biosthetique, manicures and pedicures, as well as face and body treatments using Sothys products.



— PRESS CONTACTS —

EUGENIA GONCHARENKO
Director of Marketing Communications & Public Relations
Hotel Baltchug Kempinski Moscow
ul. Balchug, 1
115035 Moscow
eugenia.goncharenko@kempinski.com
T +7 495 287 2000 M +7 903 665 1511

— SOCIAL MEDIA —

INSTAGRAM	FACEBOOK	VKONTAKTE
@hotelbaltchug	@baltchug	@hotelbaltchug



HOTEL BALTSCHUG KEMPINSKI MOSCOW

ul. Balchug, 1
115035 Moscow
Russia

T +7 495 287 2000
reservation.baltschug@kempinski.com
kempinski.com/moscow

KEMPINSKI.COM