



— PRESS KIT —

Kempinski Hotel Yinchuan

Kempinski
HOTELIERS SINCE 1897



Kempinski Hotel
Yinchuan

CHINA



— The Hotel —

KEMPINSKI HOTEL YINCHUAN BRINGS TRADITIONAL EUROPEAN TASTE HERE, COMBINING EUROPEAN LUXURY WITH THE RICH CULTURE OF YINCHUAN. AS AN INTERNATIONAL BRAND IN THE CITY, IT COMPRISES 409 SPACIOUS ROOMS, INCLUDING 41 LAVISH SUITES, SIX DISTINCTIVE RESTAURANTS, 13 CONFERENCE ROOMS, AND A 780 SQ M (8,395.6 SQ FT) GRAND BALLROOM, A FITNESS CENTRE WITH AN INDOOR POOL AND A WORLD-CLASS SPA CENTRE.

Kempinski Hotel Yinchuan is located in the heart of the city's central business district, with a 30-minute drive from the Hedong International Airport. The hotel is adjacent to the International Conference and Exhibition Centre, the museum of Ningxia and People's Square.

Kempinski Hotel Yinchuan is ideal for both business and leisure travellers. The adjacent brand opening Master International Business Centre offers high-end office space that was specially designed to meet the standards of the global enterprise.

— Guest Rooms & Suites —

Kempinski Hotel Yinchuan houses 368 deluxe rooms and 41 suites with private balconies, offering timeless comfort. All rooms have at least 40 sq m (430.6 sq ft) of space and some of them overlook the view of People's Square and Helan Mountain. 3 rooms for disabled guests are available with an interior and space, modified for wheelchairs. The Presidential

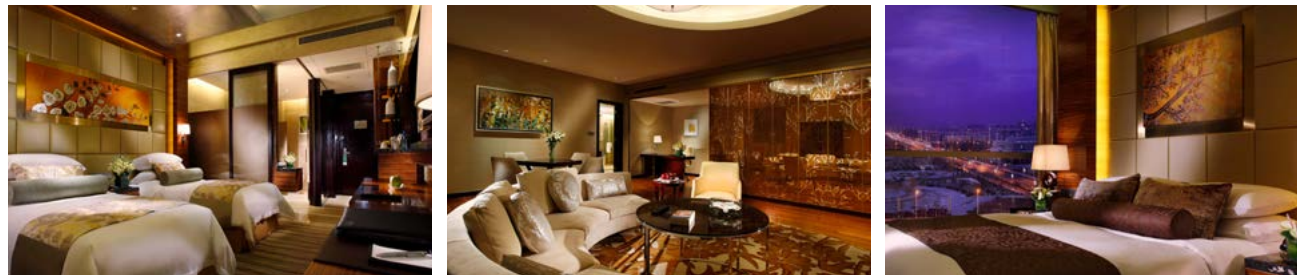
Suite and the Diplomatic Suite were designed with influences from the Western Xia Dynasty combined with European luxury and both of them are on Floor 17 of the hotel. Spectacular views of the whole city invite guests to explore this exciting city. The Diplomatic Suite comprises a 100 sqm living room and an open office area for long-stay business.

KEMPINSKI

Europe's most established
luxury hotel group
kempinski.com

KEMPINSKI HOTEL YINCHUAN

409 rooms and suites,
including one Presidential Suite
kempinski.com/yinchuan



— Executive Floor —

THE EXECUTIVE FLOORS ARE LOCATED ON FLOORS 15-17 AND THE EXECUTIVE LOUNGE IS ON FLOOR 16. MOST OF THE ROOMS OFFER BEAUTIFUL VIEWS OF THE CITY AND HELAN MOUNTAIN. ON THE EXECUTIVE FLOORS, GUESTS CAN EXPECT A HIGHER STANDARD OF ACCOMMODATION, PERSONALISED SERVICE AND A HOST OF SPECIAL PRIVILEGES AND AMENITIES.

THE EXECUTIVE FLOORS' BENEFITS INCLUDE:

- Exclusive access to Executive Lounge
- Complimentary breakfast buffet in Café Berlin or Executive Lounge
- A selection of complimentary coffee, tea, soft drinks, cookies and fresh fruit
- Executive Lounge Happy Hour from 18:00 - 20:00
- Complimentary in-room mini-bar and replenished once a day
- Meeting room for 2 hours per stay
- Complimentary pressing of two garments per stay. Late check-out until 16:00
- Complimentary high-speed internet in guest room
- Daily replenishment of fresh fruit in the guest room
- A wide selection of international and domestic newspapers
- Complimentary shoe-shine service.

— Restaurant & Bars —

CAFÉ BERLIN

Café Berlin brings a world of flavours buffet for an excellent culinary escape during the day. A luscious spread of appetisers, seasonal fruits and entrees offer an unrivalled selection and a perfect end to a sumptuous meal with a variety of desserts.

Its semi-open kitchen concept allows adventurous diners to get an up close view as the chefs blend the flavours of East and West – right before their eyes.

Café Berlin also offers an outdoor seating area to enjoy the most pleasant climate Yinchuan has to offer, including clean air and blue sky.

A large private room is available for special occasions.



BIERSCHENKE

Guests can enjoy world-class beer and even greater German hospitality! This award-winning restaurant concept serves traditional Bavarian food in a welcoming and casual setting.

Brewmaster guarantees the best quality beer to satisfy any occasion.

Adding to the entertainment, the Bierschenke offers music and two pool tables for guests to enjoy.



ZHONG·CHINESE RESTAURANT

Zhong·Chinese Restaurant is a culinary destination of its own. The Chinese master chef excels in the art of cooking live seafood and traditional Chinese dishes, which are served in the public or in the 24 private dining suites with a design in combination of Chinese and western elements, representing an exquisite dining atmosphere.

The internal design is specifically thought to reflect the qualities of the food.

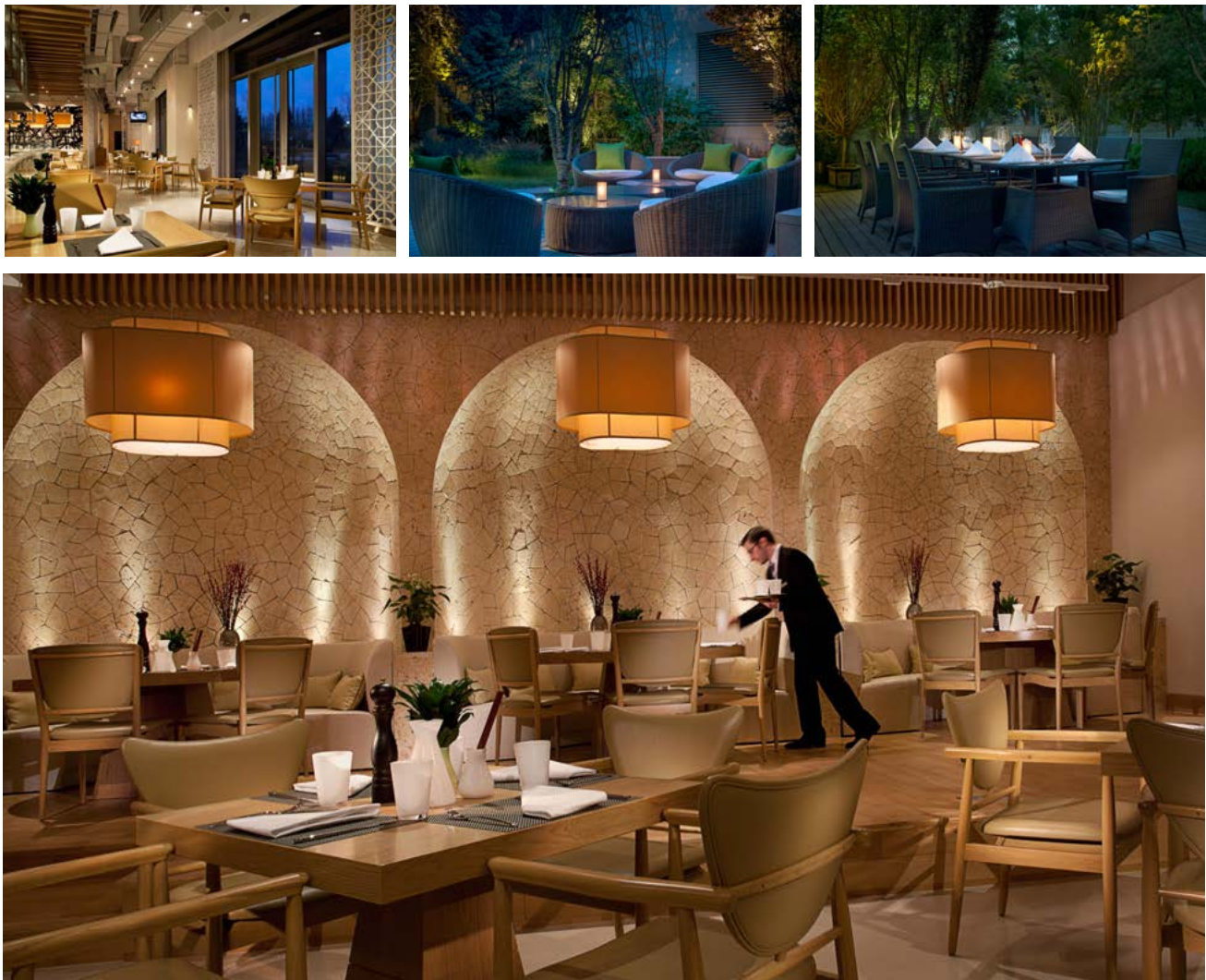
The private dining suites accommodate parties for 6-20 people and some rooms can be connected to host up to 38 guests.

All suites include a separate living area, a dining area, as well as individual washrooms, and are all well-equipped with the latest technology in the terms of audio/visual features.

Besides, a top-notch selection of French Bordeaux and Burgundy wines is the distinguishing aspect of the restaurant.

280° RESTAURANT

280° Restaurant, the new culinary icon of the hotel,
is characterised by a fashionable open kitchen and a contemporary design.
Located at the hotel's extended inner courtyard, the restaurant is a meeting-and-melting point,
and is suitable for a quick-and-casual bite,
or a more formal dining experience,
whether it be a business meeting or a private celebration.
The 280° Restaurant adds an additional dimension to the hotel and raises the standard
of the culinary scene in Yinchuan and its region.



KEMPI DELI

Kempi Deli provides healthy and nutritious delicacies
and serves a daily changing selection of cakes, breads, sandwiches,
salads and snacks as well as great coffee.



LOBBY LOUNGE

The Lobby Lounge is the main meeting point for distinguished guests to enjoy either a great selection of traditional Chinese teas, or perhaps a glass of wine with light snacks that are offered throughout the day. One of key services is our fusion-inspired “Afternoon Tea” every day, which combines European tradition with traditional Chinese flavours in order to provide a unique afternoon experience.



Dreaming Banqueting Areas

The best choice for all types of events includes wedding, conference, family parties, presentations and meetings. Kempinski Hotel Yinchuan and its seasoned team will present the best events experience. The 780 sqm ballroom with 2 terraces and large foyer is situated on the second floor and the heart of the hotel, which can alternatively be divided into two rooms of 300 sqm and 480 sqm, may accommodate up to 600 people at the same time. The ballroom is in the style of Xixia Empire elements. The ceilings are six metres high, creating a spacious, light ambience. 12 conference rooms equipped with perfect meeting and banquet facilities, ranges from 50 to 105 sqm, perfect for seminars and conferences.



— Wedding Venue —

Grand ballroom makes wedding dreams a reality.

The magic of ballroom will create a memorable day and moments that last forever.

An intimate gathering or a grand and lavish celebration, reveal to you the most perfect venue from choices of modern-styled event spaces. Flowers, matching decor, a spectacular four-tier wedding cake, music...

Hotel staff place the utmost care and attention on every little detail. Luxury accommodation is also available for the bride and groom and for wedding guests.

GROUP AND EVENTS

events.yinchuan@kempinski.com
+86 951 5165 888

MEETING FACILITIES

12 Meeting Rooms
1 Ballroom (780 sqm)



— PRESS CONTACTS —

PUBLIC RELATIONS OFFICE

Ena Sun
Public Relation Manager

ena.sun@kempinski.com
T +86 951 5165 825

kempinski.com/yinchuan

— SOCIAL MEDIA —



@Kempinski Hotel Yinchuan



@kempinski_yinchuan

KEMPINSKI HOTEL YINCHUAN

No.160 Beijing Middle Road, Jinfeng District, Yinchuan, P.R. China