



Kempinski Hotel  
Corvinus

BUDAPEST



## PREMIUM COLLECTION

– the finest selection of rooms & suites –

*Kempinski*  
HOTELIERS SINCE 1897

## PREMIUM COLLECTION

Rooms & Suites at Kempinski Hotel Corvinus Budapest

Kempinski Hotel Corvinus Budapest's rooms renovation in 2020 has created sleek, refreshed and reconstructed spaces, accented with natural motifs gently complementing the iconic city views that echo the soft buzz of Budapest.

The generous expanse of our rooms is enhanced by the delicacy of the dainty field flowers pattern of the new carpets, streamlined with accessories such as satin pillows reflecting the clear blue sky and trims as gold as the sun on the blackout curtains.



# Grand Deluxe Rooms

Defined by Alex Kravetz’s vision of contemporary luxury, Grand Deluxe Rooms combine the resulting comfort and serenity with the electrifying vista spanning over Erzsébet Park, the Budapest Eye ferris wheel, the St Stephen’s Basilica and the historical city centre’s signature edifices. These rooms accommodate a luxurious king size or twin bed, and a spacious bathroom that features both a shower and a bathtub. Connecting rooms are available in this category, as an ideal option for families. Every such room has a Nespresso coffee maker.



FACTS & FIGURES	
no.	Inventory: 59
sq	Size: 35-43 sqm / 377-463 sqft
👁	View: Various
🛏	Bed: Eastern King or Twin
🛋	Extra bed: Extra bed not available
🚿	Bathroom: Bath, Shower
👤👤	Maximum occupancy: 2 Adults
🚪	Interconnecting: Yes





## Junior Suites

Generously spacious in size, Junior Suites pamper the senses, enhancing your spatial experience with magnificent views of either the lush greenery of Erzsébet Park and its ferris wheel, the Budapest Eye, or the iconic heritage architecture of Fashion Street. The living room features a sofa and coffee table, while the bathroom has both a shower and a bathtub. A Nespresso coffee maker is also available in these rooms.



### FACTS & FIGURES

no.	<b>Inventory:</b> 17
sq	<b>Size:</b> 45-65 sqm / 463-700 sqft
👁	<b>View:</b> Various
🛏	<b>Bed:</b> Eastern King
🛋	<b>Extra bed:</b> One extra bed possible
🚿	<b>Bathroom:</b> Bath, Shower
👤👤👤	<b>Maximum occupancy:</b> 3 Adults
🚪	<b>Interconnecting:</b> Suites 732 & 832 to adjoining Corvinus Collection Suites - 169 sqm / 1 818 sqft





# Executive Suites

Our Executive Suites translate the Kempinski joie de vivre into an exceptionally sleek and expansive space, complete with a living room, bedroom with a king size bed, and a bathroom offering both a shower and bathtub as well as twin basins. The splendid contemporary aesthetic, featuring the hotel’s own artwork, is complemented by a sprawling, stunning vista of Erzsébet Park and Budapest Eye, the ferris wheel, while four Executive Suites also benefit from romantic bay view windows.

**FACTS & FIGURES - Executive Suites with separated bedroom**

no.	<b>Inventory:</b> 4
sq	<b>Size:</b> 57sqm / 614 sqft
👁️	<b>View:</b> Ferris wheel view
🛏️	<b>Bed:</b> Eastern King
🛋️	<b>Extra bed:</b> Yes
🚿	<b>Bathroom:</b> Bath, Shower
👤👤👤	<b>Maximum occupancy:</b> 3 Adults
🚪	<b>Interconnecting:</b> No



**FACTS & FIGURES Executive Suites - open plan suites**

no.	Inventory: 6
sq	Size: 57 sqm / 614 sqft
👁	View: Ferris wheel view
🛏	Bed: Eastern King
🛋	Extra bed: Yes
🚿	Bathroom: Bath, Shower
👤👤👤	Maximum occupancy: 3 Adults
🚪	Interconnecting: No





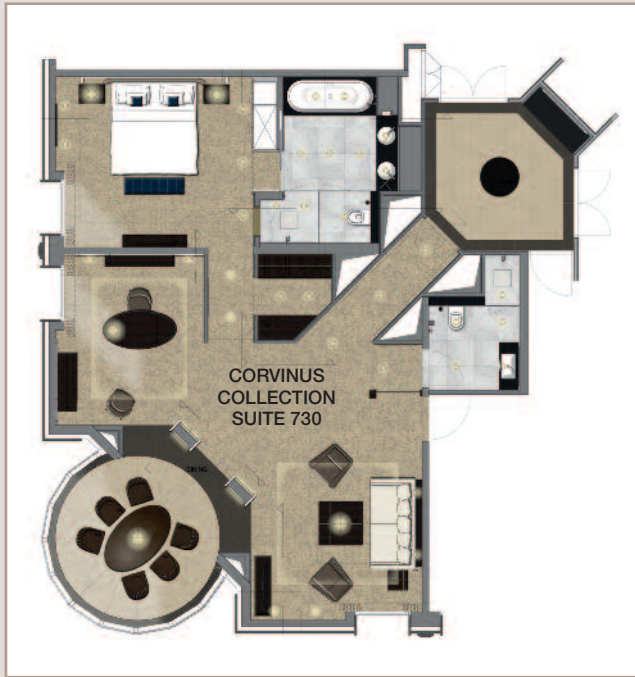
# Corvinus Art Collection Suites 730 & 830

The ultimate in Corvinus luxury, Suite 730 and Suite 830 ensure a royal experience. We envisioned a striking design accented with elegant grey and comforting beige throughout the maximised space, outfitting the living and work rooms, the bedroom and the bathrooms with enhanced functions and charming touches. Graced with the hotel’s own artwork, these suites draw in central Budapest’s urban landscape, from its iconic heritage edifices to the Budapest Eye, the ferris wheel in Erzsébet Park.



## FACTS & FIGURES

no.	Inventory: 2
sq	Size: 104 sqm / 1118 sqft
eye	View: Ferris wheel view
bed	Bed: Eastern King
extra bed	Extra bed: Yes
bath	Bathroom: Bath, Shower
people	Maximum occupancy: 3 Adults
interconnecting	Interconnecting: To Junior Suite - 169 sqm / 1 818 sqft







# Corvinus Art Collection Suite Herend 860

A tribute to the craftsmanship and an acknowledgment of the rich heritage the city has to offer, reinterpreted in a contemporary way. Beautiful views to the Citadel and Statue of Liberty, soft beige, green and pink shades, precious paintings, Biedermeier furniture, artistic upholstery – the Herend Suite offers an original and stylish milieu. The carpeting in the spacious living room reflects the floral details of the world-famous Herend porcelain decorating the suite. The quiescent bedroom with dressing room and adjacent bathroom invites guests for a relaxing night.

**FACTS & FIGURES (Herend Suite 860)**

no.	Inventory: 1
sq	Size: 124 sqm / 1 333 sqft
👁️	View: Street view
🛏️	Bed: Eastern King
🛏️	Extra bed: Yes
🚿	Bathroom: Bath, Shower
👤👤👤	Maximum occupancy: 3 Adults
🚪	Interconnecting: Yes - 153 sqm / 1 645 sqft





# Corvinus Art Collection Suite 960

Harmony, serenity and elegance – the synthesis of sense and form pairs timeless design with modern-day functionality. Bright, shiny surfaces are combined with noble individual pieces in dark wenge wood with embedded brass details. Art pieces of renowned local artists adorn the walls. The suite features a cushy sitting room with plentiful wardrobe space, a working and dining area and an elegant and commodious bathroom. To top it off, guests wake up in the gorgeous bedroom in the rotunda to the unparalleled view of Gellért Hill. Enjoy endless space with your family in a three-bedroom Infinity Suite by connecting with a Grand Deluxe Room and a Junior Suite.

FACTS & FIGURES (Deák Suite 960)

no.

Inventory: 1

sq

Size: 117 sqm / 1 260 sqft; with 3 bedrooms: 200 sqm / 2 153 sqft

View: Street view

Bed: Eastern King

Extra bed: Yes

Bathroom: Bath, Shower

Maximum occupancy: 6 Adults (when booked with 3 bedrooms)

Interconnecting: Yes - Grand Deluxe Room / Junior Suite







# Presidential Suite Corvinus 930

Located on the top floor, the Presidential Suite Corvinus offers a stunning view of Budapest sprawling majestically outside the windows, framing Elisabeth Park with the Ferris wheel and St Stephen’s Basilica. The two-bedroom suite provides ample space for entertaining, featuring a spacious living room, a generous working area and an elegant and functional dining room fully serviced by a preparation kitchenette. The master bedroom sets the stage for a relaxing stay, enhanced by a stunningly exclusive bathroom. Modern statues and colourful paintings from the Corvinus Art Collection set off the muted shades of the interior design.

**FACTS & FIGURES (Presidential Suite Corvinus 930)**

no.	Inventory: 1
sq	Size: 200 sqm / 2 153 sqft with two bedrooms
eye	View: Park view
bed	Bed: Eastern King
sofa	Extra bed: Yes
bath	Bathroom: Bath, Shower
people	Maximum occupancy: 4 Adults
door	Interconnecting: Yes





# Additional luxury services

### LIMOUSINE TRANSFER

Safe and comfortable, our Limo Service makes transfer to and from the hotel part of a luxurious journey.

### BUTLER

A comprehensive range of services remain open and available throughout the entire day and night, anticipating all eventualities when you may need bespoke personal assistance.

### KEMPINSKI THE SPA

Complete with the latest technology fitness equipment and various types of saunas and steam rooms, Kempinski The Spa offers a wide range of relaxing and rejuvenating treatments, among them its signature Hungary Mud regime, harnessing the power of locally sourced mineral-rich active ingredients.

### GASTRONOMIC QUARTER DOWNTOWN BUDAPEST

A diverse culinary experience, GQDB is home to a range of iconic and one-of-a-kind gastronomic outlets – Nobu, ÉS Bisztró, ÉS Deli, The Living Room, Blue Fox The Bar.

### IN-ROOM DINING

Culinary options from the outlets of Gastronomic Quarter Downtown Budapest are available to order any time of the day and night.

### NOBU

The first Central European restaurant of the world-famous chain, New Japanese cuisine’s Budapest outpost serves signature Nobu as well as locally inspired dishes.

### BENEDICTION BRUNCH

The Living Room, our remake of the Budapest coffeehouse experience, invites to spend a long lazy late morning on Saturdays and Sundays, serving Eggs Benedict inspired and turbo-charged by sumptuous ingredients such as caviar and accoutrements such as champagne, and live DJ ambient music.

### ÉS BISZTRÓ

Austro-Hungarian imperial cooking at its best, ÉS Bisztró reimagines a precious historical heyday’s favourite (now rare) delicacies in a contemporary fashion.

### BLUE FOX THE BAR

Serving classic and creative cocktails, Blue Fox The Bar is the city’s most central and inventive cocktail bar, which spills out onto a terrace in the summer.

Kempinski Hotel  
Corvinus Budapest  
Erzsébet tér 7-8  
1051 Budapest  
Hungary

T +36 1 429 3777  
+36 1 429 3375 (Reservations)  
F +36 1 429 4777  
reservations.corvinus@kempinski.com  
kempinski.com/budapest

GPS Long: E 19.0523529 / 19°3'8  
GPS Lat: N 47.4969111 / 47°29'49

### KEMPINSKI.COM

*Kempinski* | DISCOVERY

