



Royal Maxim  
Palace Kempinski

CAIRO

# A TALE OF GLAMOUR

*Kempinski*  
HOTELIERS SINCE 1897

# Palace Overview

Featuring an unmatched palatial experience, the Palace marks the city’s new business and leisure district in the heart of New Cairo, 15 minutes away from Cairo International Airport. Encompassing 245 guestrooms and suites as private retreats, the focus of the design is on comfort and elegance. Named after the world’s most exclusive diamonds, Excelsior Ballroom is the largest ballroom in the country. The ‘Palace’ has a distinctive exterior that embraces royalty, azure cupolas crowning it and a courtyard evoking Austrian palatial landmarks.



## Discover a Tale of Sophistication & Glamour

### ROOMS & SUITES

Total of 245 rooms and suites measuring between 45-386 sqm

- 9 Pool Cabanas
- 100 Deluxe City View
- 49 Deluxe Pool
- 16 Grand Deluxe
- 50 Royal Club Rooms
- 9 Maxim Suites
- 10 Palace Suites
- 2 Royal Suites

### HOTEL FACILITIES AND RECREATION

- Butler Service
- Nespresso Machines in all Room and Suite Categories
- Connecting Rooms\*
- Non-smoking Rooms\*
- Special Needs Rooms\*
- Concierge Assistance
- Laundry/Dry Cleaning Service
- Shoeshine Service
- Luxury Limousine Service
- On call Doctor
- Babysitting Service

- Beauty Centre
- Private Theatre
- Indoor Pool / Outdoor Pool
- Retail Shops
- High-tech Audio Visual Equipment
- Car Rental
- Spa and Health Centre
- Kids Club - Le Petit Royal
- VIP Airport Pick-up/Drop-off

\* Available Upon Request

### DINING

Discover 9 exceptional restaurants and bars; each created to complement your pace of life

- **The State**  
*Classic buffet dining room offering European dishes infused with a local touch.*
- **Lucca**  
*Home-style recipes inspired by the authentic flavours of Italy.*
- **Yana Restaurant**  
*Featuring the favourites of Asian Cuisine.*

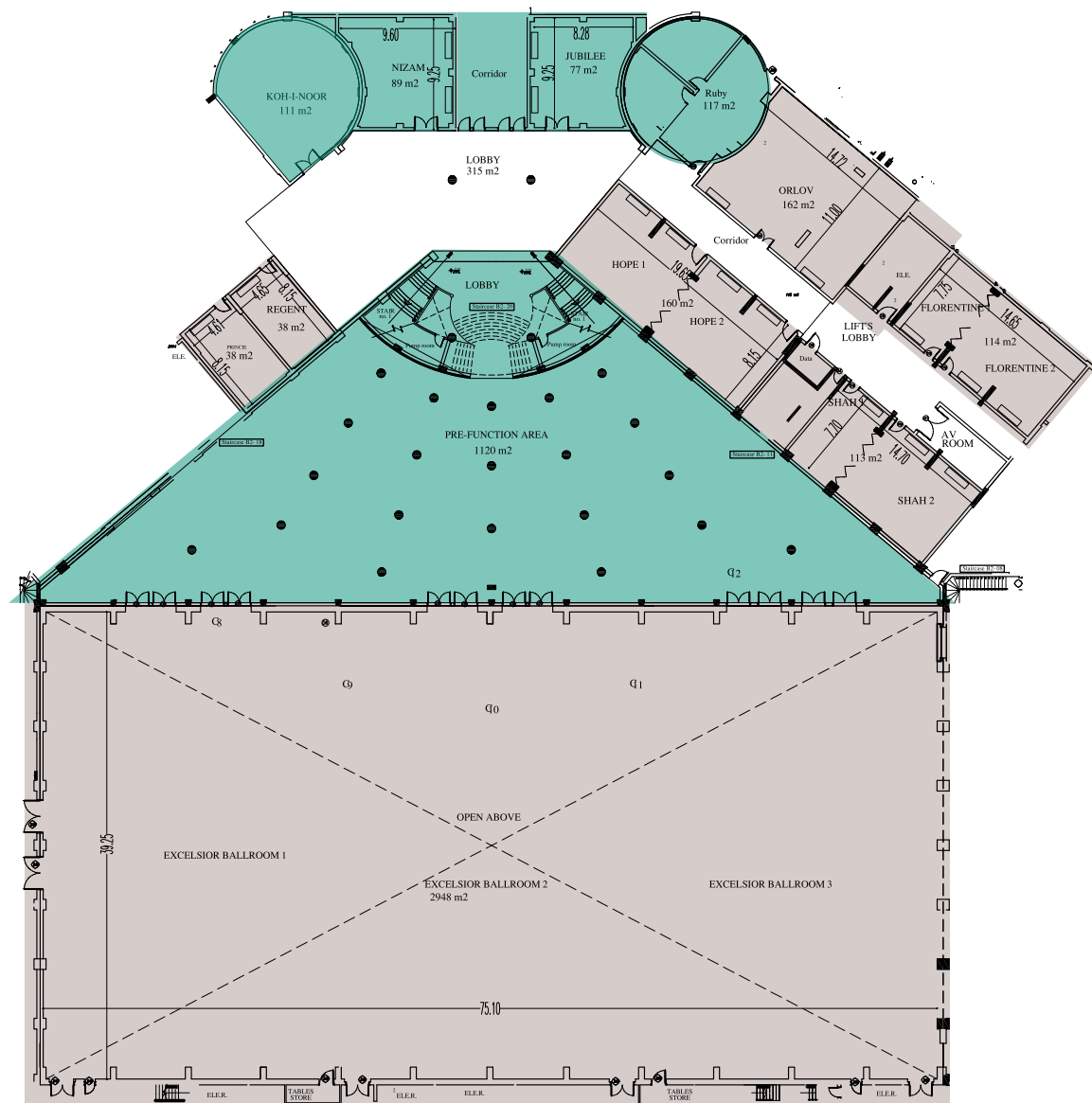
- **Bab Al-Qasr**  
*A Lebanese cuisine infused with Egyptian flavours alongside live Belly Dancing on selected nights and Shisha.*
- **Romanov**  
*A European grill room and steakhouse offering prime meat cuts and fresh seafood selections.*
- **1897 Bar & Cigar Lounge**  
*An old British club feel with a regal backdrop serving a cocktail list from 1897 till present, elegant spirits, wine and cigars.*
- **Vibes Lounge & Terrace**  
*An ambient lounge meets a European coffeehouse offering the best bakeries and pastries in town.*
- **Aqua Chill**  
*A pool bar in the morning and an evening alfresco dining spot with international menu offerings.*
- **Night Club & Lounge**  
*For Private Events*

### ROYAL CLUB LOUNGE

Private Lounge for Royal Club Rooms and Suites guests, serving breakfast, lunch, dinner delicacies, tea and coffee, soft drinks and “Happy Hour”, including alcoholic drinks.

### RESENSE SPA

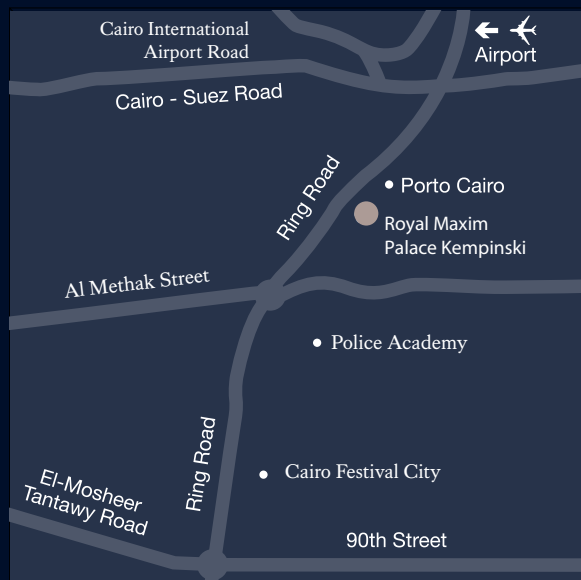
A feast of colour, art, music and treatments at one of the largest spas in town, stretching across 1712 sqm. Resense Spa is the first authentic European spa in Egypt that takes you through a palatial discovery of different holistic and healing approaches, leaving you relaxed, rejuvenated and pampered from head to toe.



MEETINGROOM	L x W x H	AREA (SQM)	THEATRE	CLASSROOM	U SHAPE	BOARDROOM	BANQUET	SOCIAL STYLE
Excelsior Ballroom	78 x 39 x 5.25	3042	2500	1200	-	-	1600	1400
Excelsior Ballroom I	26 x 39 x 5.25	1014	800	400	-	-	540	350
Excelsior Ballroom II	26 x 39 x 5.25	1014	800	400	-	-	540	350
Excelsior Ballroom III	26 x 39 x 5.25	1014	800	400	-	-	540	350
Nizam	9.21 x 9.55 x 3.80	88	30	18	20	18	40	-
Jubilee	9.20 x 8.45 x 3.80	78	-	-	-	12	-	-
Hope	19.36 x 7.85 x 3.80	152	90	70	42	38	90	60
Hope I	9.59 x 7.85 x 3.80	75	50	24	27	20	40	-
Hope II	9.59 x 7.85 x 3.80	75	40	24	15	14	40	-
Orlov	11.11 x 14.34 x 3.80	159	60	36	36	30	48	60
Shah	7.39 x 14.37 x 3.80	106	70	48	33	30	56	70
Shah I	7.39 x 4.58 x 3.80	34	15	12	15	12	16	20
Shah II	7.39 x 9.65 x 3.80	71	50	30	21	18	32	50
Florentine	7.62 x 14.42 x 3.80	110	70	48	33	30	56	70
Florentine I	7.62 x 4.71 x 3.80	36	15	12	15	12	20	-
Florentine II	7.62 x 9.62 x 3.80	73	50	30	21	18	32	-
Regent	4.27 x 8.15 x 3.80	35	-	-	-	10	-	-
Princie	4.27 x 8.15 x 3.80	35	-	-	-	10	-	-
Koh-I-Noor (Round Shape)	12 x 3.80	113	72	48	24	18	40	70
Ruby (Round Shape)	11.2 x 3.80							
The Terrace (Outdoor)	-	856	-	-	-	-	280	250

# Contact Us

For an easy and efficient booking experience, book directly with Kempinski, via [kempinski.com](http://kempinski.com), through the Kempinski mobile app, or your preferred travel professional, and benefit from the best rates and service.



## ROYAL MAXIM PALACE KEMPINSKI

First Settlement - New Cairo  
P.O. Box 41 - 11477 Cairo - Egypt

T +20 2 22495300  
[sales.royalmaxim@kempinski.com](mailto:sales.royalmaxim@kempinski.com)  
[kempinski.com/royalmaxim](http://kempinski.com/royalmaxim)

GPS Long: E 13° 22' 50"  
GPS Lat: N 29° 30' 58"