



– PRESS KIT –

# Kempinski Hotel Shenzhen

*Kempinski*  
HOTELIERS SINCE 1897

  
Kempinski Hotel  
Shenzhen  
CHINA  
深圳凯宾斯基酒店





## — Kempinski Hotel Shenzhen —

Kempinski Hotel Shenzhen is strategically located in Nanshan District, overlooking Shenzhen Bay and set in the heart of the city's new commercial development zone. The hotel is surrounded with grade A office buildings (Coastal City, Poly and Tiley), a domestic first-class opera house, a large shopping centre and an international entertainment and leisure centre.



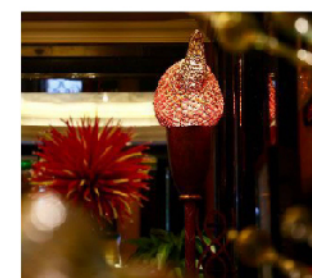
## — Location —

Kempinski Hotel Shenzhen has convenient accessibility to Shenzhen Bao'an Airport, and Shenzhen Convention and Exhibition Centre. It's five minutes by car to the Shenzhen Bay Bridge, which provides easy access to/from Hong Kong. Line No. 2 and No. 11 of the Hou Hai Metro Station are adjacent to the hotel.

## — Design Concept —

The design inspiration of the hotel comes from the poem of Xin Qiji, a poet in the Southern Song Dynasty that describes a romantic scene where a man finally finds his dream girl amid the fading light and flames in the distance after searching "a thousand times".

Every guest embarks on a journey seeking an ideal hotel for the perfect stay and Kempinski Hotel Shenzhen is just like the stunning beauty in the dim light, shining brightly with its outstanding quality, meticulously crafted details and anticipatory service. From the moment guests step into the hotel lobby, they are surrounded by the elegant atmosphere and exquisite furnishings. Here, every stay is a wonderful encounter.







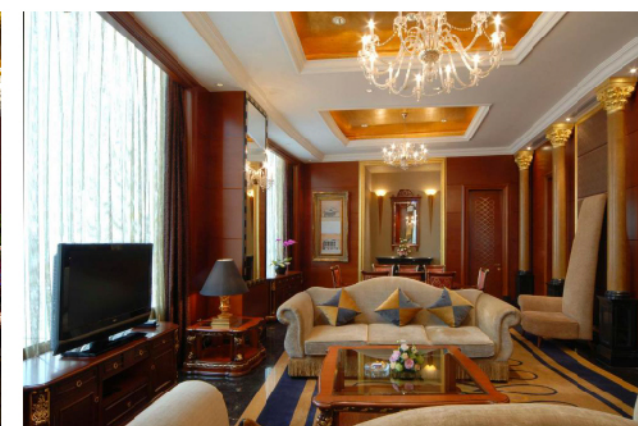
## — Guest Rooms and Suites —

Kempinski Hotel Shenzhen comprises 383 guestrooms with super-king comfort beds, floor-to-ceiling window and an in-bath television in all suites to create a suitable environment for the exclusive guests.

The Executive Floors provide exceptional facilities and personalized services designed to provide maximum comfort. All rooms are luxuriously appointed with 24-hour personal butler services and complimentary high-speed broadband Internet access. The Executive Lounge serves food and beverages all day and provides an exclusive place to meet and relax to assure guests an enjoyable stay.

## — The Presidential Suite —

The Presidential Suite at Kempinski Hotel Shenzhen is a luxury space of 245 sqm on Floor 25. The spacious bathrooms are luxuriously designed with an LCD television, Jacuzzi® and a separate shower cubicle. Guests can enjoy a 180° panoramic view of the Shenzhen Bay and have access to various Executive Floor privileges, and 24-hour butler service for an unrivalled service.







## — Executive Lady's Room —

The Lady's Room is exclusively for discerning female guests. The guestroom is over 70 sqm and surrounded with a quiet and private ambiance. The Lady's Executive Room is decorated with unique amenities that are elaborately designed to cater to female travelers. The feminine interior design elements of the rooms with purple curtains and bedding, hand-painted moth orchid on the wall, create a welcoming atmosphere. A wide range of indulgent amenities, including luxurious bath salts, essential oils, facial mask, nail dryer and silky pajamas, and a spacious closet are provided for comfort.

## — The Ultimate Dining Experience —

The hotel offers the ultimate culinary experience with a fine selection of dining options. Whether it's for business, family or gathering with friends, guests will enjoy the elegant environment and delicious cuisine.

## — Seasons —

Seasons is an all-day dining restaurant serving innovative culinary delights. With a strong emphasis on grills and seafood, it features sumptuous buffets, including a host of freshly prepared favorites from the interactive kitchen, and serves breakfast, lunch and dinner.







### — Haitao —

HaiTao serves refined Chinese cuisine. It consists of six private dining room and a cozy dining hall, offering a pleasant experience of the profound Chinese food culture with the most attentive service. HaiTao is an ideal place for business entertainment as well as private gatherings.



### — The Lounge —

Located in the lobby, The Lounge offers the guests a relaxed atmosphere and an amazing selection of beverages, culinary delights and live entertainment, The Lounge is the perfect place to meet friends and relax.



### — Conference and Banquet Facilities —

With a variation of five meeting rooms and the 940 sqm Grand Ballroom, with a ceiling height of 6m and a 375 sqm foyer space, Kempinski Hotel Shenzhen's meeting facilities are able to accommodate to 850 people.

The conference facilities are equipped with a high-resolution projector, big screen, supreme lighting systems and Wi-Fi access. What the hotel offers is not just a conference or banquet venue, but a professional event team that makes every event the perfect experience.



### — Dream Wedding —

The Kempinski Ballroom with its unique character and ambience is a perfect venue for weddings, offering a spacious pillar-less banqueting space for events up to 720 guests. Choose from different wedding banquet settings and arrangements, featuring floral centerpieces and a selection of table linens. It takes only one day for a wedding ceremony, but a whole lifetime for an everlasting memory.



## — Wellness Centre —

The Wellness Centre is equipped with a well-equipped gym, yoga room and steam room to meet the needs of scientific fitness and deep relief. The indoor swimming pool with panoramic floor-to-ceiling windows adopts a four-season intelligent temperature control system, allowing guests to revitalize the vitality and embracing a quality life.



## Press Contact

JENNY ZHONG

Director of Marketing and Communications

Jenny.zhong@kempinski.com

T +86 88888888 ext. 8003

## Social Media



@KEMPINSKI HOTEL SHENZHEN



@KEMPINSKI HOTEL SHENZHEN



@KEMPINSKI HOTEL SHENZHEN

Kempinski Hotel Shenzhen  
Hou Hai Bin Road, Hai De San Dao, Nanshan District, Shenzhen, P.R. China