



– PRESS KIT –

# KEMPINSKI ROYAL RESIDENCE NYMPHENBURG



## — History —

### A PLACE OF ROYAL HISTORY AND LIVING HERITAGE

The story of Kempinski Royal Residence Nymphenburg began long before it became an exclusive sanctuary within the Kempinski portfolio. It is deeply rooted in the history of the nearby Nymphenburg Palace and the esteemed lineage of the House of Wittelsbach – one of Europe's most prominent noble families.

Nymphenburg Palace was built in 1664 as a summer residence for Elector Ferdinand Maria of Bavaria and his consort, Henriette Adelaide of Savoy. Influenced by Italian architectural

designs, the Palace evolved into one of the most important Baroque buildings in Europe. For generations, it served the Bavarian monarchy as both a retreat and a stage for courtly life. A key component of the Palace is the Kavaliershaus, now home to the Royal Residence. Built in 1750 as part of the semi-circular Palace rondel, it was originally designed as private accommodation for high-ranking guests and officials of the court. To this day, the building retains the understated elegance that once characterised court life at Nymphenburg.



Munich, Nymphenburg Palace and Park, aerial view © Bayerische Schlösserverwaltung, Florian Schröder |  
Painting © Bayerische Schlösserverwaltung, Andrea Gruber, Rainer Herrmann, Munich

Nymphenburg Palace from the city side, Bernardo Bellotto, gen. Canaletto, 1761, Munich Residence



## — A Royal Sanctuary —

TAILORED SERVICE BY ONE OF EUROPE'S  
MOST PRESTIGIOUS HOTELS

The Kempinski Royal Residence Nymphenburg is more than a luxurious retreat – it is a living monument to royal history and contemporary lifestyle. Once the summer residence of Bavarian monarchs, this exclusive private residence now welcomes guests from around the world. Overlooking Nymphenburg Palace and nestled between the Royal Porcelain Manufactory and the palace gardens, the estate uniquely blends history, craftsmanship, and architecture.

Guests at the Royal Residence benefit from the exceptional services provided by the team at Hotel Vier Jahreszeiten Kempinski Munich, the prestigious grand hotel on Maximilianstrasse.

The bespoke five-star service from the renowned Munich hotel ensures the Royal Residence is truly one of a kind in Germany, offering a private sanctuary with the discreet and personalised service of a grand hotel.



Hotel Vier Jahreszeiten Kempinski Munich in the heart of Munich on the beautiful Maximilianstrasse



King Maximilian II of Bavaria



„Hotel zu den vier Jahreszeiten“, exterior view, 1858

## — A Historic Connection —

THE HOTEL IN MUNICH'S CITY CENTER

Since 1858, guests have enjoyed the unique flair and sophisticated elegance of this hotel, which was originally commissioned by King Maximilian II.

The hotel has consistently honored its royal heritage, and its connection to the Wittelsbach dynasty can still be felt throughout.

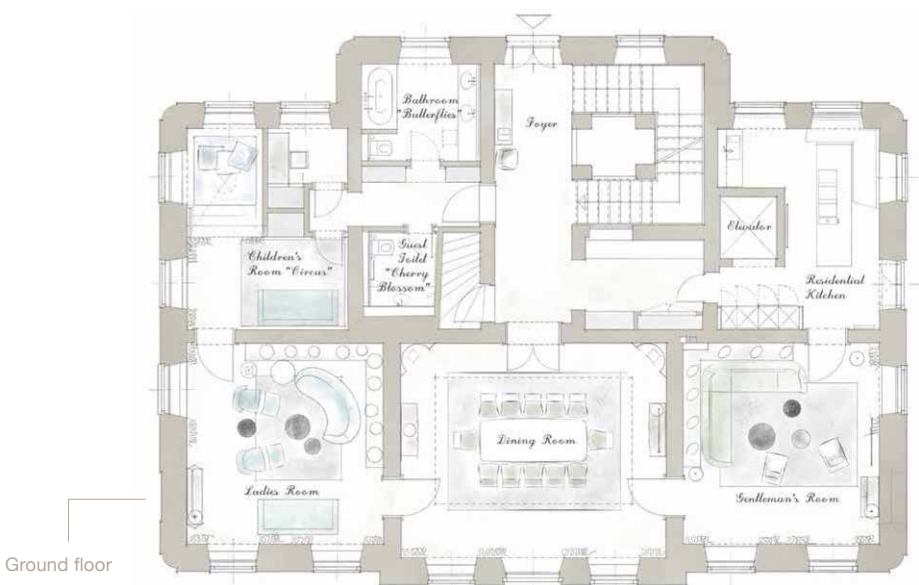
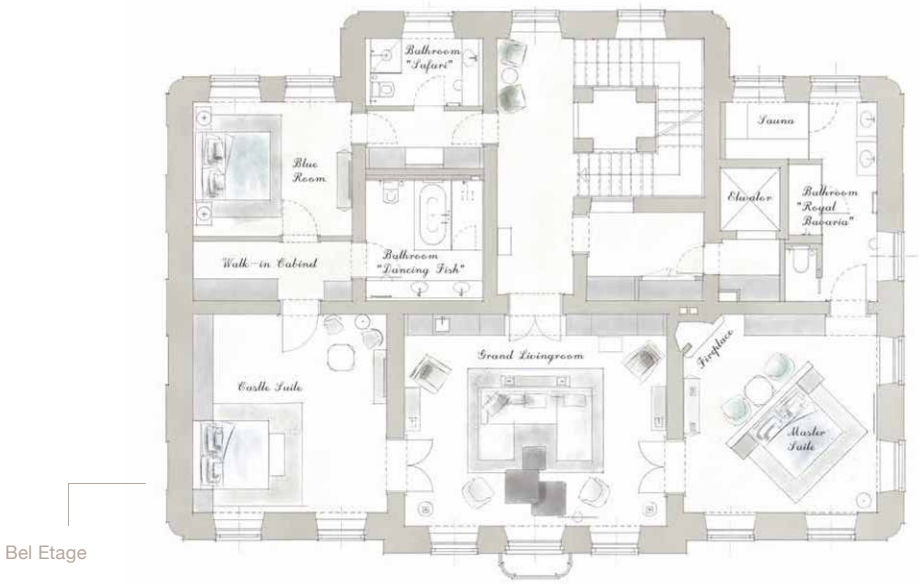
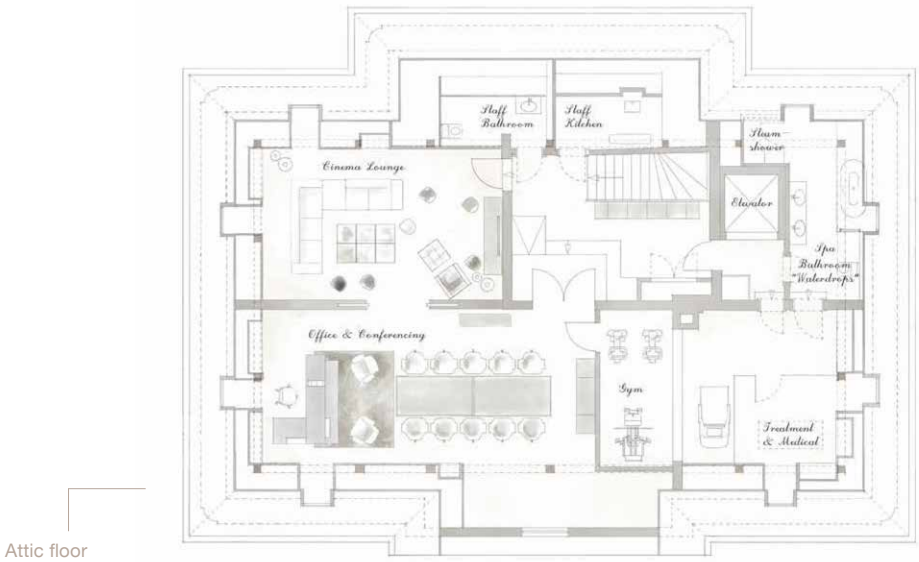
**KEMPINSKI**  
• Europe's most  
established luxury  
hotel group  
[KEMPINSKI.COM](http://KEMPINSKI.COM)

**HOTEL VIER JAHRESZEITEN  
KEMPINSKI MÜNCHEN**  
• 296 rooms and suites,  
including three presidential suites  
[KEMPINSKI.COM/VIERJAHRESZEITEN](http://KEMPINSKI.COM/VIERJAHRESZEITEN)









# Kempinski Royal Residence Nymphenburg

Conceived as a luxurious Kavaliershaus, the 836 sq metre residence spans three floors and features four bedrooms, three living areas and seven bathrooms. It also includes a private spa, a family kitchen, an elegant boardroom, and a dedicated entertainment suite. Additionally, guests of the Royal Residence can expect exquisite design and cutting-edge technology.

The Royal Residence offers access to the adjoining outdoor Majolica Terrace, with capacity for up to 100 people. Designed as a tribute to the Mediterranean lifestyle, the terrace features a fountain and water features, adorned with mag-

nificent majolica birds from the Nymphenburg Porcelain Manufactory. Guests of the Royal Residence enjoy a discreet 24/7 butler service, accessible at the touch of a button from any room, elegantly integrated into a custom-designed porcelain turtle.

Additional amenities include a private chef, daily housekeeping, and full access to the services of Hotel Vier Jahreszeiten Kempinski Munich – from concierge assistance and reservations to event planning. Five separate apartments for accompanying staff are available upon request.

### HIGHLIGHTS

- Four uniquely designed bedrooms
- Seven luxurious bathrooms featuring thematic porcelain art
- Three spacious living rooms
- A dining room for up to 12 guests
- A fully equipped residential kitchen

### HIGHLIGHTS

- A private home cinema
- A private conference and meeting room
- An exclusive spa area complete with a sauna, steam bath, and gym
- A Mediterranean Majolica terrace adorned with water features and art objects



## — Location & Surroundings —

### AT THE HEART OF BAVARIAN HISTORY

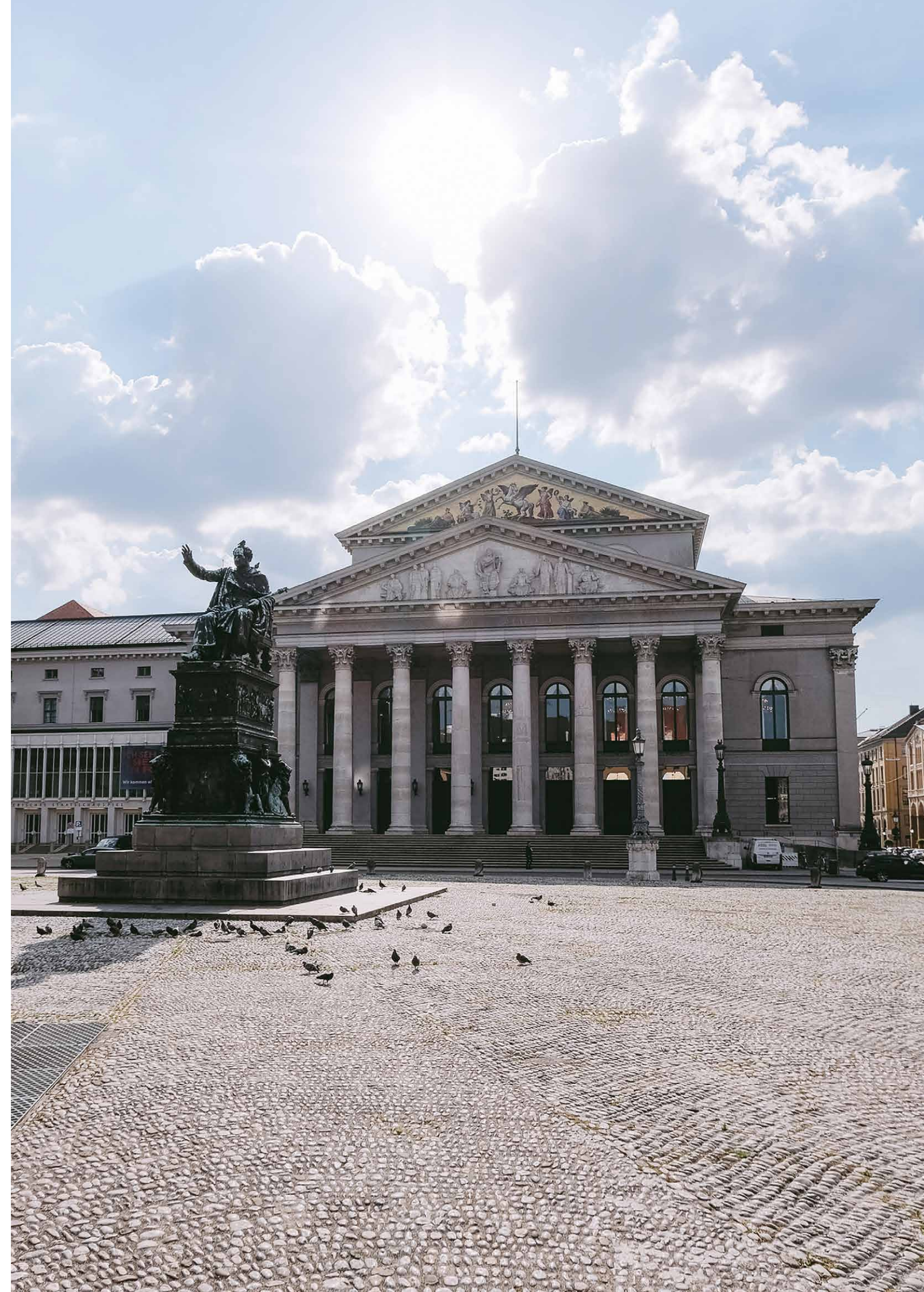
Kempinski Royal Residence Nymphenburg is located just outside Munich's city center – nestled in the northern semi-circular rondel, directly facing Nymphenburg Palace. From the Bel Etage, guests can enjoy a view of the splendid Palace courtyard, the historic fountain, and the Palace itself.

Only a few steps away lies the Nymphenburg Porcelain Manufactory, known for its exquisite handmade pieces that play a central role in the

residence's design. Here, the connection to art, history, and craftsmanship is not incidental – it is essential to the experience. The surrounding area offers idyllic walking paths, royal gardens, quaint cafés, and museums such as the Museum "Mensch und Natur" or the Botanical Garden – all within walking distance. Despite its proximity to these attractions, the residence remains a tranquil retreat, offering protection, discretion, and a sense of seclusion steeped in Bavarian history.



Nymphenburg Palace, garden facade at sunrise © Bayerische Schlösserverwaltung, Martina Faustel  
Botanical Garden © Botanical Garden Nymphenburg, Munich







## — The Living Area —

### WHERE ART MEETS PORCELAIN

Kempinski Royal Residence Nymphenburg is a tribute to design, architecture, art and craftsmanship. Behind its neoclassical façade lies an interior meticulously crafted with attention to detail, materials, and ambiance. Every tile, every washbasin, and every extravagant piece of furniture has been custom-designed and handmade for each room.

On the ground floor, the dining room features a long table for up to twelve guests. Adjacent to the dining room are the “Grande Dame Room” and the “Royal Room”. Also on this level is the lovingly designed children’s room, known as the “Circus Room.”

On the first floor – the Bel Etage – lies the residence’s heart: the grand living room with panoramic windows and a direct view of Nymphenburg Palace. Flanking the salon are the main bedrooms: the master bedroom with its adjacent “Royal Bavaria Bathroom” and sauna, and the “Castle Suite,” which connects to the “Blue Room,” another bedroom.

The top floor combines retreat and function. It houses a private cinema, gym, medical treatment room, and a conference room. A guest bathroom, staff kitchen, and additional bathroom complete the offering.





## — The Reception Rooms —

WITH A VIEW OF NYMPHENBURG PALACE

The three light-filled salons serve as the social center of the house, with each room showcasing its own concept in architecture, color scheme, and decor.

The dining room invites guests to linger and is an ideal space for evenings with friends, intimate dinners, or festive celebrations. Next door is the “Grande Dame Room”, decorated in pastel tones with porcelain birds in cages. Opposite lies the “Royal Room”, featuring sculptures of

various dog breeds and a striking wall artwork in deep indigo, crafted from polished stainless steel.

On the Bel Etage, the Grand Salon offers a direct view of Nymphenburg Palace. The room is elegantly designed in black and white, accented with cream textiles and wooden details. A wall-spanning bookshelf and porcelain figurines from the Nymphenburg manufactory – including elephants and birds – add artistic touch to the space.





## — The Bedrooms —

**EACH ROOM IS A UNIQUE WORK OF ART**

The bedrooms of Kempinski Royal Residence Nymphenburg are located on the ground floor and the Bel Etage. Each room is uniquely designed and thoughtfully aligned with its spatial concept.

The Master Bedroom, overlooking Nymphenburg Palace, is clearly structured, with warm materials and a serene color palette. A special highlight is the open fireplace made of Isar granite, an original from 1750. In contrast, the Castle Suite has a more playful character, with soft pastel tones and porcelain figurines of seahorses, polar bears, and parrots. A striking ceiling light adorned with pink peacock

feathers adds to its charm. Adjacent lies the “Blue Room”, one of the three bedrooms on the upper floor, distinguished by its bold shades of blue. On the wall hangs the porcelain artwork “My Private Sky”, an edition of seven hand-painted plates depicting the night sky at the time of the founding of the Nymphenburg Porcelain Manufactory in 1747. The children’s room – also called the “Circus Room” – is located on the ground floor and designed as a colorful retreat for young guests. The vibrant wallpaper sets the stage, complemented by hand-crafted circus animal figurines from the Nymphenburg Porcelain Manufactory.







## — The Bathrooms —

### CRAFTSMANSHIP IN EVERY DETAIL

Each of the seven bathrooms has a unique design that complements the adjoining room, with a strong focus on detail and artistic themes.

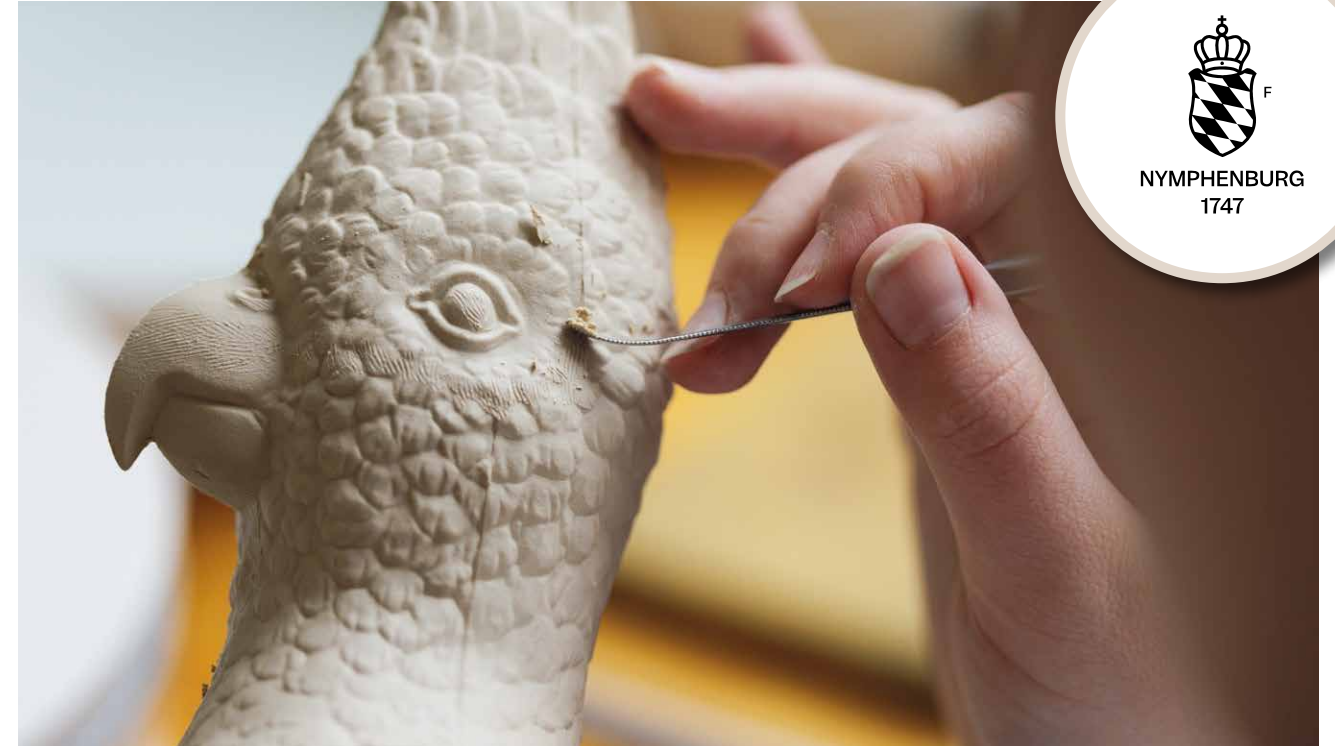
The children's bathrooms – including the “Dancing Fish” bath – are full of charming details. Wall tiles and porcelain basins are hand-painted with underwater scenes, bringing the space to life. Crafted in delicate, matte white using a special relief technique, the adjacent “Safari” bathroom reveals a detailed design

made of biscuit porcelain – with a giraffe in the shower as a striking centerpiece.

A design highlight is the Master Bedroom's bathroom. Inspired by the royal tableware service of 1792, classic rod and pearl patterns are interpreted in geometric biscuit tiles accented with 24-karat gold. Even the sauna reflects this craftsmanship, featuring a translucent lithophane made of biscuit porcelain depicting a fine panoramic view of Lake Tegernsee.







## — The Nymphenburg Porcelain — Manufactory

**AVANTGARDE IN PORCELAIN – SINCE 1747**

The Nymphenburg Porcelain Manufactory is the last of its kind where every piece is crafted entirely by hand. Founded in 1747 by the Bavarian Royal Family, the art of porcelain-making has been practiced here with exceptional precision and dedication ever since.

“Manu Factum” – made by hand – reflects a deep commitment to traditional craftsmanship.

The master workshops at the Northern Palace Rondel in Munich produce iconic tableware and objects, as well as bespoke interior solutions – created in collaboration with some of today’s most renowned artists, architects, and designers. In 2016, the art of porcelain painting at Nymphenburg was officially recognised and added to Germany’s list of Intangible Cultural Heritage by the German UNESCO Commission.



## — Press Contact —

**CAROLIN GROVE-SKUBALLA**  
Director PR  
Kempinski Royal Residence Nymphenburg Munich  
Nördliches Schlossrondell 8  
80638 Munich  
Germany

carolin.grove@kempinski.com  
T +49 (0) 89 2125 2718

kempinski.com/nymphenburg





**KEMPINSKI ROYAL RESIDENCE NYMPHENBURG**

Nördliches Schlossrondell 8

80638 Munich

Germany

T +49 89 2125 0

[reservation.nymphenburg@kempinski.com](mailto:reservation.nymphenburg@kempinski.com)

[kempinski.com/nymphenburg](https://kempinski.com/nymphenburg)

**KEMPINSKI.COM**