



Kempinski Hotel
Guiyang

CHINA

贵阳凯宾斯基大酒店

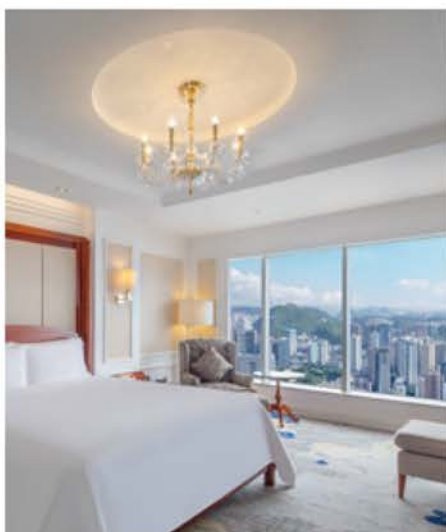
STEP INTO THE FOREST CITY

Kempinski

HOTELIERS SINCE 1897

We welcome you to explore the European-inspired city of Guiyang

Located in the heart of the central business district, this 5-star luxury hotel is the ideal destination for guests to enjoy the bustling city of Guiyang. 366 elegantly furnished rooms and suites, outstanding dining venues, and ballrooms shine with modern convenience and European flair. Only a few steps from city landmarks like Jiaxiu Tower and Wenchang Pavilion, experience the essence of urban culture and enjoy a journey of casual strolls. All of this invites guests to stay with Kempinski Hotel Guiyang in the European-inspired city of Guiyang.



Facilities & Services

NUMBERS OF ROOMS AND SUITES

- Total of 366 rooms and suites
- 119 Deluxe Rooms
- 119 Panorama Deluxe
- 50 Executive Deluxe
- 24 Executive Panorama Deluxe
- 29 Executive Suites
- 23 Panorama Suites
- 1 Ambassador Suite
- 1 Presidential Suite

HOTEL SERVICES

- Lady in Red, concierge and butler service
- Room service
- Regular and express valet services
- Limousine services
- Secure parking

GUEST ROOM FACILITIES

- Flat-screen HDTV
- Satelite TV programmer
- Internet access
- IDD telephone with voice mail
- In-room electronic safe and mini bar
- Electrical curtain
- Smart toilet
- Spacious marble bathrooms
- Room comfort menu
- Non-smoking rooms
- Disabled rooms

RESTAURANTS AND BARS

- Elements
- Dragon Palace
- Lobby Lounge
- Kemp's Deli

EXECUTIVE FLOOR AND SUITES

- Complimentary breakfast
- Check-in and check-out in Executive Lounge
- Coffee, tea and refreshments throughout the day
- High tea is from 14:30 to 17:00
- Happy Hour - A variety of liquor beverages and snacks from 17:30 to 22:00
- Complimentary ironing service for one suite
- Complimentary use of Executive Lounge meeting room for one hour, subject to availability (advance booking is required)

MEETING AND BANQUET FACILITIES

- Kempinski Grand Ballroom (770 sq m, pillar-free) with spacious foyer
- 540 sq m Guiyang Ballroom, pillar-free
- 8 Conference Rooms (ranging from 45 to 252 sq m)
- LED & projectors
- Additional equipment available on request

PLACES OF INTEREST

- Jiaxiu Pavilion
- Wenchang Pavilion
- Qianling Mountain Park
- Hua Xi Park
- Qingyan Ancient Town
- Tianhetan Scenic Spot
- Huangguoshu Waterfall

FAMOUS SPOTS

ON THE INTERNET

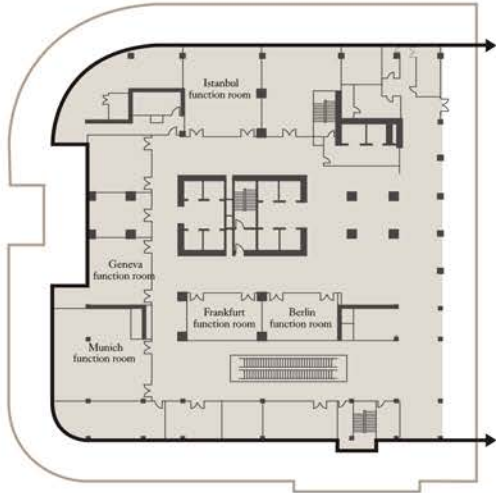
- Dongshan Temple
- Qingyun Market
- Mingsheng Road Market
- Xinyin 1950 Discovery

GENERAL INFORMATION

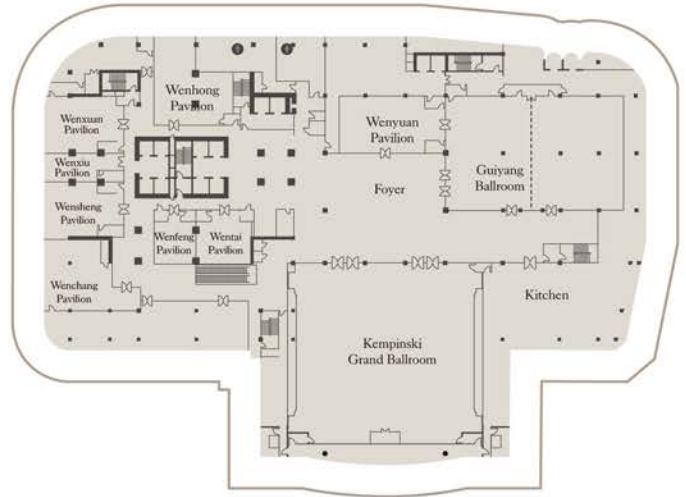
- Language - Mandarin
- Local currency - Chinese Yuan (CNY)
- Average temperature range from 5°C in winter and 24°C in summer

Meetings & Events Plan

Floor 2



Floor 3

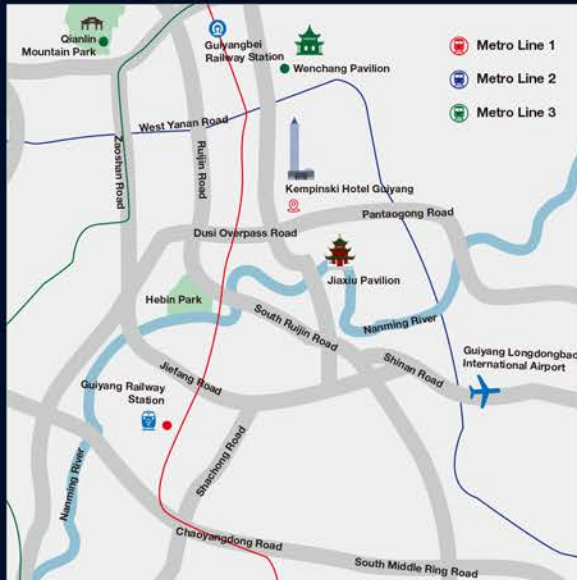


MEETING ROOMS	FLOOR AREA sq m	THEATRE	CLASSROOM	U-SHAPE	BOARDROOM	BANQUET	COCKTAIL
Berlin Function Room	40	-	-	-	14	-	-
Frankfurt Function Room	40	-	-	-	14	-	-
Munich Function Room	110	80	52	26	30	-	-
Geneva Function Room	56	55	45	21	24	20	40
Istanbul Function Room	88	70	45	40	43	50	70
Kempinski Grand Ballroom	770	600	390	220	220	400	650
Guiyang Ballroom	504	400	220	150	150	260	400
1/2 Guiyang Ballroom	252	200	108	45	54	120	150
Wenyan Pavilion	98	70	45	40	43	60	-
Wentai Pavilion	60	-	-	-	-	10	-
Wenfeng Pavilion	40	-	-	-	-	8	-
Wenchang Pavilion	95	-	-	-	-	15	-
Wensheng Pavilion	80	-	36	-	-	20	-
Wenxiu Pavilion	40	-	-	-	-	6	-
Wenxuan Pavilion	90	-	45	-	-	20	-
Wenhong Pavilion	110	-	45	-	-	40	-



Contact Us

For an easy and efficient booking experience, book directly with Kempinski, via kempinski.com, through the Kempinski mobile app, or your preferred travel professional, and benefit from the best rates and service.



KEMPINSKI HOTEL GUIYANG

68 Huguo Road, Guiyang
Guizhou 550002
China

T +86 851 8599 9999
F +86 851 8599 9888
reservations.guiyang@kempinski.com
kempinski.com/guiyang

GPS Long: E 106°42' 52.01"
GPS Lat: N 26°34' 44.29"